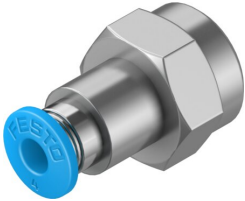


# Push-in fitting QSF-1/8-4-B

Part number: 153022

FESTO



 General operating condition

## Data sheet

| Feature                                       | Value   |
|---|---|
| Size  | Standard  |
| Nominal size                                  | 3 mm  |
| Tubing insertion depth                        | 14.9 mm   |
| Type of seal on screwed plug                  | Coating   |
| Mounting position                             | optional  |
| Design  | Straight design   |
| Size of pack                                  | 10  |
| Design  | Push-pull principle   |
| Operating pressure complete temperature range | -0.095 MPa ... 0.6 MPa  |
| Operating pressure complete temperature range | -0.95 bar ... 6 bar   |
| Operating pressure complete temperature range | -13.775 psi ... 87 psi  |
| Temperature-dependent operating pressure      | -0.095 MPa ... 1.4 MPa  |
| Temperature-dependent operating pressure      | -0.95 bar ... 14 bar  |
| Temperature-dependent operating pressure      | -13.775 psi ... 203 psi   |
| Note on operating pressure                    | Water: max. 0.6 MPa at max. 50°C                                      |
| Operating medium                              | Compressed air to ISO 8573-1:2010 [7:-:-]<br>Water (liquid, ice-free) |
| Note on operating and pilot medium            | Lubricated operation possible   |
| Corrosion resistance class CRC                | 1 - Low corrosion stress  |
| LABS (PWIS) conformity                        | VDMA24364-B1/B2-L   |
| Ambient temperature                           | -10 °C ... 80 °C  |
| Nominal torque                                | 7 Nm  |
| Tolerance for nominal tightening torque       | ± 20%   |
| Product weight                                | 13 g  |
| Type of mounting                              | External hexagon, size 14 mm  |
| Pneumatic connection, port 1                  | Female thread G1/8  |
| Pneumatic connection, port 2                  | For tubing outside diameter of 4 mm                                   |
| Colour of release ring                        | Blue  |
| Note on materials                             | RoHS-compliant  |
| Material housing                              | Brass, nickel-plated  |
| Material release ring                         | POM   |
| Material tubing seal                          | NBR   |
| Material tubing clamp component               | High-alloy stainless steel  |