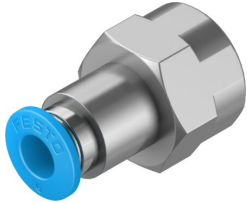


Push-in fitting

QSF-1/4-6-B

Part number: 153024

FESTO



 General operating condition

Data sheet

| Feature | Value |
|---|---|
| Size | Standard |
| Nominal size | 5 mm |
| Tubing insertion depth | 17 mm |
| Type of seal on screwed plug | Coating |
| Mounting position | optional |
| Design | Straight design |
| Size of pack | 10 |
| Design | Push-pull principle |
| Operating pressure complete temperature range | -0.095 MPa ... 0.6 MPa |
| Operating pressure complete temperature range | -0.95 bar ... 6 bar |
| Operating pressure complete temperature range | -13.775 psi ... 87 psi |
| Temperature-dependent operating pressure | -0.095 MPa ... 1.4 MPa |
| Temperature-dependent operating pressure | -0.95 bar ... 14 bar |
| Temperature-dependent operating pressure | -13.775 psi ... 203 psi |
| Note on operating pressure | Water: max. 0.6 MPa at max. 50°C |
| Operating medium | Compressed air to ISO 8573-1:2010 [7:-:-] Water (liquid, ice-free) |
| Note on operating and pilot medium | Lubricated operation possible |
| Corrosion resistance class CRC | 1 - Low corrosion stress |
| LABS (PWIS) conformity | VDMA24364-B1/B2-L |
| Ambient temperature | -10 °C ... 80 °C |
| Nominal torque | 9 Nm |
| Tolerance for nominal tightening torque | ± 20% |
| Product weight | 23 g |
| Type of mounting | External hexagon, size 17 mm |
| Pneumatic connection, port 1 | Female thread G1/4 |
| Pneumatic connection, port 2 | For tubing outside diameter of 6 mm |
| Colour of release ring | Blue |
| Note on materials | RoHS-compliant |
| Material housing | Brass, nickel-plated |
| Material release ring | POM |
| Material tubing seal | NBR |
| Material tubing clamp component | High-alloy stainless steel |