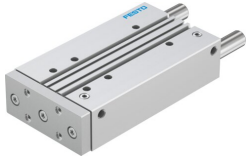


Guided drive DFM-50-200-P-A-GF

Part number: 170877

FESTO



 [General operating condition](#)

Data sheet

Feature	Value
Distance from centre of gravity of load to yoke plate xs	50 mm
Stroke	200 mm
Piston diameter	50 mm
Operating mode, drive unit	Yoke
Cushioning	Elastic cushioning rings/plates at both ends
Mounting position	Any
Guide	Plain-bearing guide
Design	Guidance
Position detection	Via proximity switch
Symbol	00991737
Operating pressure	0.1 MPa ... 1 MPa
Operating pressure	1 bar ... 10 bar
Max. speed	0.6 m/s
Mode of operation	Double-acting
Operating medium	Compressed air to ISO 8573-1:2010 [7:4:4]
Note on operating and pilot medium	Lubricated operation possible (in which case lubricated operation will always be required)
Corrosion resistance class CRC	1 - Low corrosion stress
LABS (PWIS) conformity	VDMA24364-B1/B2-L
Cleanroom suitability, measured according to ISO 14644-14	Class 6 according to ISO 14644-1
Ambient temperature	-20 °C ... 80 °C
Impact energy in end positions	1 J
Max. force Fy	1533 N
Max. force Fy static	1533 N
Max. force Fz	1533 N
Max. force Fz static	1533 N
Max. moment Mx	84.33 Nm
Max. torque Mx static	84.33 Nm
Max. moment My	69.77 Nm
Max. torque My static	69.77 Nm
Max. moment Mz	69.77 Nm
Max. torque Mz static	69.77 Nm
Max. permissible torque load Mx as a function of stroke	10.62 Nm
Max. effective load dependent upon stroke at defined distance xs	174 N
Theoretical force at 0.6 MPa (6 bar, 87 psi), return stroke	1057 N
Theoretical force at 0.6 MPa (6 bar, 87 psi), advance stroke	1178 N

Feature	Value
Moving mass	3935 g
Product weight	8238 g
alternative connections	See product drawing
Pneumatic connection	G1/4
Note on materials	RoHS compliant
Material cover	Wrought aluminium alloy
Material seals	NBR
Material housing	Wrought aluminium alloy
Material piston rod	High-alloy stainless steel