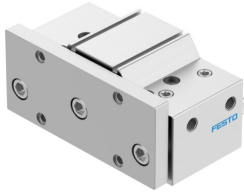


Guided drive DFM-100-25-P-A-KF

Part number: 170967

FESTO



 [General operating condition](#)

Data sheet

| Feature | Value |
|--|--|
| Distance from centre of gravity of load to yoke plate xs | 125 mm |
| Stroke | 25 mm |
| Piston diameter | 100 mm |
| Operating mode, drive unit | Yoke |
| Cushioning | Elastic cushioning rings/plates at both ends |
| Mounting position | Any |
| Guide | Recirculating ball bearing guide |
| Design | Guidance |
| Position detection | Via proximity switch |
| Symbol | 00991737 |
| Operating pressure | 0.05 MPa ... 1 MPa |
| Operating pressure | 0.5 bar ... 10 bar |
| Max. speed | 0.4 m/s |
| Mode of operation | Double-acting |
| Operating medium | Compressed air to ISO 8573-1:2010 [7:4:4] |
| Note on operating and pilot medium | Lubricated operation possible (in which case lubricated operation will always be required) |
| Corrosion resistance class CRC | 0 - No corrosion stress |
| LABS (PWIS) conformity | VDMA24364-B1/B2-L |
| Cleanroom suitability, measured according to ISO 14644-14 | Class 6 according to ISO 14644-1 |
| Ambient temperature | -5 °C ... 60 °C |
| Impact energy in end positions | 1 J |
| Max. force Fy | 3043 N |
| Max. force Fy static | 5400 N |
| Max. force Fz | 3043 N |
| Max. force Fz static | 5400 N |
| Max. moment Mx | 286.02 Nm |
| Max. torque Mx static | 507.6 Nm |
| Max. moment My | 76.06 Nm |
| Max. torque My static | 135 Nm |
| Max. moment Mz | 76.06 Nm |
| Max. torque Mz static | 135 Nm |
| Max. permissible torque load Mx as a function of stroke | 60.83 Nm |
| Max. effective load dependent upon stroke at defined distance xs | 332 N |
| Theoretical force at 0.6 MPa (6 bar, 87 psi), return stroke | 4418 N |
| Theoretical force at 0.6 MPa (6 bar, 87 psi), advance stroke | 4712 N |

| Feature | Value |
|--|----------------------------|
| Moving mass | 5696 g |
| Product weight | 10520 g |
| Centre of gravity of moving mass as a function of stroke | 35 mm |
| alternative connections | See product drawing |
| Pneumatic connection | G3/8 |
| Note on materials | RoHS compliant |
| Material cover | Wrought aluminium alloy |
| Material seals | NBR |
| Material housing | Wrought aluminium alloy |
| Material piston rod | High-alloy stainless steel |