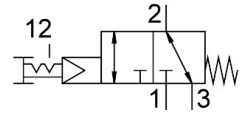


Pushbutton valve VHEF-PTC-B32-G18

Part number: 5299707

FESTO



General operating condition

Data sheet

| Feature | Value |
|---|--|
| Valve function | 3/2-way, double solenoid |
| Type of actuation | Manual |
| Construction width | 20 mm |
| Standard nominal flow rate (standardised to DIN 1343) | 750 l/min |
| pneumatic working port | G1/8 |
| Operating pressure | 0.35 MPa ... 1 MPa |
| Operating pressure | 3.5 bar ... 10 bar |
| Design | Poppet seat |
| Nominal size | 5.6 mm |
| Exhaust-air function | Can be throttled |
| Instructions on use | Actuate manually only |
| Sealing principle | Soft |
| Mounting position | Any |
| Manual override | Detenting |
| Type of piloting | Piloted |
| Pilot air supply | Internal |
| Flow direction | Reversible |
| Symbol | 00995885 |
| lap | Zero lap |
| Pilot pressure | 0.35 MPa ... 1 MPa |
| Pilot pressure | 3.5 bar ... 10 bar |
| Pilot pressure | 50.75 psi ... 145 psi |
| Max. switching frequency | 0.5 Hz |
| Explosion protection | Zone 1 (ATEX) Zone 2 (ATEX) Zone 21 (ATEX) Zone 22 (ATEX) |
| Operating medium | Compressed air to ISO 8573-1:2010 [7:-:-] |
| Note on operating and pilot medium | Lubricated operation possible (in which case lubricated operation will always be required) |
| Corrosion resistance class CRC | 1 - Low corrosion stress |
| LABS (PWIS) conformity | VDMA24364-B1/B2-L |
| Media temperature | -10 °C ... 60 °C |
| Ambient temperature | -10 °C ... 60 °C |
| Actuating force | 20 N |
| Unlocking force | 25 N |
| Product weight | 168 g |

| Feature | Value |
|------------------------------|----------------------------------|
| Type of mounting | With through-hole |
| Pneumatic connection, port 1 | G1/8 |
| Pneumatic connection, port 2 | G1/8 |
| Pneumatic connection, port 3 | G1/8 |
| Note on materials | RoHS compliant |
| Material cover | Reinforced PA |
| Material seals | NBR |
| Material housing | Anodised wrought aluminium alloy |