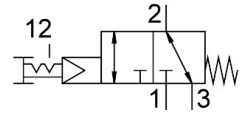


Pushbutton valve VHEF-PTC-B32-G14

Part number: 5299713

FESTO



General operating condition

Data sheet

Feature	Value
Valve function	3/2-way, double solenoid
Type of actuation	Manual
Construction width	20 mm
Standard nominal flow rate (standardised to DIN 1343)	870 l/min
pneumatic working port	G1/4
Operating pressure	0.35 MPa ... 1 MPa
Operating pressure	3.5 bar ... 10 bar
Design	Poppet seat
Nominal size	6 mm
Exhaust-air function	Can be throttled
Instructions on use	Actuate manually only
Sealing principle	Soft
Mounting position	Any
Manual override	Detenting
Type of piloting	Piloted
Pilot air supply	Internal
Flow direction	Reversible
Symbol	00995885
lap	Zero lap
Pilot pressure	0.35 MPa ... 1 MPa
Pilot pressure	3.5 bar ... 10 bar
Pilot pressure	50.75 psi ... 145 psi
Max. switching frequency	0.5 Hz
Explosion protection	Zone 1 (ATEX) Zone 2 (ATEX) Zone 21 (ATEX) Zone 22 (ATEX)
Operating medium	Compressed air to ISO 8573-1:2010 [7:-:-]
Note on operating and pilot medium	Lubricated operation possible (in which case lubricated operation will always be required)
Corrosion resistance class CRC	1 - Low corrosion stress
LABS (PWIS) conformity	VDMA24364-B1/B2-L
Media temperature	-10 °C ... 60 °C
Ambient temperature	-10 °C ... 60 °C
Actuating force	20 N
Unlocking force	25 N
Product weight	161 g

Feature	Value
Type of mounting	With through-hole
Pneumatic connection, port 1	G1/4
Pneumatic connection, port 2	G1/4
Pneumatic connection, port 3	G1/4
Note on materials	RoHS compliant
Material cover	Reinforced PA
Material seals	NBR
Material housing	Anodised wrought aluminium alloy