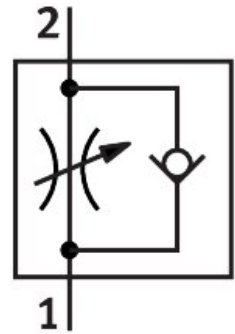


# One-way flow control valve GRLA-1/4-QS-6-RS-D

Part number: 534338

FESTO



 [General operating condition](#)

## Data sheet

Feature	Value
Valve function	One-way flow control function
Pneumatic connection, port 1	QS-6
Pneumatic connection, port 2	G1/4
Adjustment component	Knurled screw
Type of mounting	Screw-in With male thread
Standard nominal flow rate in flow control direction	400 l/min
Standard nominal flow rate in blocked direction	290 l/min ... 420 l/min
Operating pressure	0.2 bar ... 10 bar
Ambient temperature	-10 °C ... 60 °C
Maritime classification	See certificate
Mounting position	Any
Symbol	00991452
Operating pressure complete temperature range	0.2 bar ... 10 bar
Standard flow rate in flow control direction 0.6->0 MPa (6->0 bar, 87->0 psi)	600 l/min
Standard flow rate in non-return direction 0.6->0 MPa (6->0 bar, 87->0 psi)	570 l/min ... 680 l/min
Operating medium	Compressed air to ISO 8573-1:2010 [7:4:4]
Note on operating and pilot medium	Lubricated operation possible (in which case lubricated operation will always be required)
LABS (PWIS) conformity	VDMA24364-B1/B2-L
Cleanroom suitability, measured according to ISO 14644-14	Class 4 according to ISO 14644-1
Storage temperature	-10 °C ... 40 °C
Media temperature	-10 °C ... 60 °C
Nominal torque	5 Nm
Product weight	50 g
Note on materials	RoHS compliant
Material seals	NBR
Material hollow bolt	Wrought aluminium alloy anodised

<b>Feature</b>	<b>Value</b>
Material release ring	POM
Material knurled head	Wrought aluminium alloy anodised
Material adjusting screw	High-alloy stainless steel
Material swivel fitting	Die-cast zinc