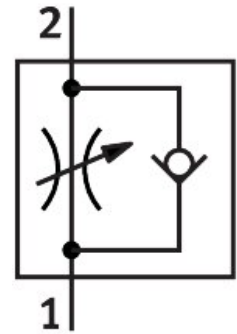


# One-way flow control valve GRLA-3/8-QS-6-RS-D

Part number: 534341

FESTO



 [General operating condition](#)

## Data sheet

| Feature   | Value  |
|---|--|
| Valve function  | One-way flow control function  |
| Pneumatic connection, port 1  | QS-6   |
| Pneumatic connection, port 2  | G3/8   |
| Adjustment component  | Knurled screw  |
| Type of mounting  | Screw-in<br>With male thread   |
| Standard nominal flow rate in flow control direction                          | 495 l/min  |
| Standard nominal flow rate in blocked direction                               | 320 l/min ... 495 l/min  |
| Operating pressure  | 0.2 bar ... 10 bar   |
| Ambient temperature   | -10 °C ... 60 °C   |
| Maritime classification   | See certificate  |
| Mounting position   | Any  |
| Symbol  | 00991452   |
| Operating pressure complete temperature range                                 | 0.2 bar ... 10 bar   |
| Standard flow rate in flow control direction 0.6->0 MPa (6->0 bar, 87->0 psi) | 740 l/min  |
| Standard flow rate in non-return direction 0.6->0 MPa (6->0 bar, 87->0 psi)   | 840 l/min ... 890 l/min  |
| Operating medium  | Compressed air to ISO 8573-1:2010 [7:4:4]  |
| Note on operating and pilot medium  | Lubricated operation possible (in which case lubricated operation will always be required) |
| LABS (PWIS) conformity  | VDMA24364-B1/B2-L  |
| Cleanroom suitability, measured according to ISO 14644-14                     | Class 4 according to ISO 14644-1   |
| Storage temperature   | -10 °C ... 40 °C   |
| Media temperature   | -10 °C ... 60 °C   |
| Nominal torque  | 10 Nm  |
| Product weight  | 72 g   |
| Note on materials   | RoHS compliant   |
| Material seals  | NBR  |
| Material hollow bolt  | Wrought aluminium alloy<br>anodised  |

| <b>Feature</b>           | <b>Value</b>                        |
|--------------------------|-------------------------------------|
| Material release ring    | POM                                 |
| Material knurled head    | Wrought aluminium alloy<br>anodised |
| Material adjusting screw | High-alloy stainless steel          |
| Material swivel fitting  | Die-cast zinc                       |