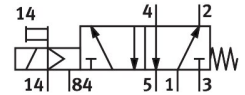


Solenoid valve MFH-5-1/8-S-EX

Part number: 535909

FESTO



 [General operating condition](#)

Data sheet

| Feature | Value |
|---|---|
| Valve function | 5/2-way, monostable |
| Type of actuation | Electric |
| Construction width | 26 mm |
| Standard nominal flow rate (standardised to DIN 1343) | 500 l/min |
| pneumatic working port | G1/8 |
| Operating voltage | Via solenoid coil, must be ordered separately |
| Operating pressure | 0 MPa ... 1 MPa |
| Operating pressure | 0 bar ... 10 bar |
| Design | Poppet seat |
| Type of reset | Mechanical spring |
| CE mark (see declaration of conformity) | To EU Explosion Protection Directive (ATEX) |
| Explosion protection certification outside the EU | EPL Db (GB) EPL Gb (GB) |
| UKCA marking (see declaration of conformity) | To UK EX instructions |
| ATEX category gas | II 2G |
| ATEX category dust | II 2D |
| Explosion ignition protection type for gas | Ex h IIC T4 Gb |
| Explosion ignition protection type for dust | Ex h IIIC T130°C Db |
| Explosion ambient temperature | -5°C ≤ Ta ≤ +40°C |
| Degree of protection | IP65 |
| Nominal size | 5 mm |
| Grid dimension | 27 mm |
| Exhaust-air function | With flow control option |
| Sealing principle | Soft |
| Mounting position | optional |
| Manual override | Detenting |
| Type of piloting | Pilot actuated |
| Pilot air supply | External |
| Flow direction | Non-reversible |
| Symbol | 00991024 |
| lap | Underlap |
| Pilot pressure | 0.12 MPa ... 0.8 MPa |
| Pilot pressure | 1.2 bar ... 8 bar |
| Switching time off | 36 ms |
| Switching time on | 8 ms |
| Max. positive test pulse with 0 signal | 2200 µs |

| Feature | Value |
|--|---|
| Max. negative test pulse with 1 signal | 3700 µs |
| Characteristic coil data | See solenoid coil, to be ordered separately |
| Explosion protection | Zone 1 (ATEX) Zone 1 (UKEX) Zone 2 (ATEX) Zone 21 (ATEX) Zone 21 (UKEX) Zone 22 (ATEX) |
| Operating medium | Compressed air to ISO 8573-1:2010 [7:4:4] |
| Note on operating and pilot medium | Lubricated operation possible (in which case lubricated operation will always be required) |
| Corrosion resistance class CRC | 1 - Low corrosion stress |
| LABS (PWIS) conformity | VDMA24364-B1/B2-L |
| Storage temperature | -20 °C ... 60 °C |
| Media temperature | -5 °C ... 40 °C |
| Pilot medium | Compressed air to ISO 8573-1:2010 [7:4:4] |
| Ambient temperature | -5 °C ... 40 °C |
| Product weight | 270 g |
| Type of mounting | On manifold rail With through-hole |
| Breather connection | M3 |
| Pilot exhaust port 84 | M5 |
| Pilot air port 14 | M5 |
| Pneumatic connection, port 1 | G1/8 |
| Pneumatic connection, port 2 | G1/8 |
| Pneumatic connection, port 3 | G1/8 |
| Pneumatic connection, port 4 | G1/8 |
| Pneumatic connection, port 5 | G1/8 |
| Note on materials | RoHS-compliant |
| Material seals | NBR TPE-U(PU) |
| Material housing | Die-cast aluminium |