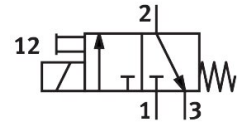


On/off valve MS12-EE-G-V24

Part number: 541496

FESTO



[General operating condition](#)

Data sheet

Feature	Value
Design	Piston gate valve
Type of actuation	Electrical
Exhaust-air function	Cannot be throttled
Manual override	Detenting Non-detenting
Type of reset	Mechanical spring
Type of piloting	Piloted
Symbol	00991308
Valve function	3/2-way, single solenoid, closed
Operating pressure	3 bar ... 16 bar
lap	Overlap
Standard nominal flow rate (standardised to DIN 1343)	25000 l/min ... 32000 l/min
Duty cycle	100%
Characteristic coil data	24 V DC: 4.5 W
Permissible voltage fluctuations	+/-10%
Operating medium	Compressed air to ISO 8573-1:2010 [7:4:4] Inert gas
Note on operating and pilot medium	Lubricated operation possible (in which case lubricated operation will always be required)
Corrosion resistance class CRC	2 - Moderate corrosion stress
LABS (PWIS) conformity	VDMA24364-B1/B2-L
Media temperature	-10 °C ... 50 °C
Degree of protection	IP65
Ambient temperature	-10 °C ... 50 °C
Type of mounting	Either: Inline installation With accessories
Mounting position	Any
Flow direction	Non-reversible
Product weight	3800 g
Pneumatic connection, port 1	Manifold module
Pneumatic connection, port 2	Manifold module
Pneumatic connection, port 3	G1
Pilot air supply	Internal
Electrical connection	To DIN EN 175301-803 Square design
Material seals	NBR

Feature	Value
Material housing	Die-cast aluminium