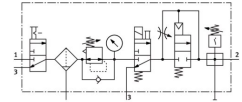


Service unit combination MSB6-1/2:C3J3D1A1F3-WP

Part number: 542281

FESTO



 [General operating condition](#)

Data sheet

| Feature | Value |
|---|--|
| Size | 6 |
| Series | MS |
| Actuator lock | Rotary knob with detent can be closed with accessories |
| Mounting position | Vertical +/-5° |
| Grade of filtration | 5 µm |
| Condensate drain | Manual, rotating |
| Design | Branching module Soft-start valve Pressure switch On/off valve Filter regulator with pressure gauge |
| Controller function | Output pressure constant With primary pressure compensation With secondary exhausting With return flow function |
| Bowl guard | Plastic bowl guard |
| Symbol | 00991759 |
| Pressure gauge (ANALOG) or Pressure display (DIGITAL) | With pressure gauge |
| Operating pressure | 4,5 bar ... 18 bar |
| Pressure regulation range | 4 bar ... 12 bar |
| Standard nominal flow rate (standardised to DIN 1343) | 3000 l/min |
| Characteristic coil data | 24 V DC: 1.5 W |
| Operating medium | Compressed air to ISO 8573-1:2010 [7:4:4] Inert gas |
| Note on operating and pilot medium | Lubricated operation possible (in which case lubricated operation will always be required) |
| Corrosion resistance class CRC | 2 - Moderate corrosion stress |
| LABS (PWIS) conformity | VDMA24364-B1/B2-L |
| Storage temperature | -10 °C ... 60 °C |
| Suitable for use with food | See supplementary material information |
| Air purity class at output | Compressed air to ISO 8573-1:2010 [6:4:4] |
| Media temperature | -10 °C ... 60 °C |
| Ambient temperature | -10 °C ... 60 °C |
| Product weight | 3500 g |
| Type of mounting | With accessories |
| Pneumatic connection, port 1 | G1/2 |
| Pneumatic connection, port 2 | G1/2 |

| Feature | Value |
|------------------------------|--------------------|
| Pneumatic connection, port 3 | G1/2 |
| Note on materials | RoHS compliant |
| Material housing | Die-cast aluminium |
| Material bowl | Makrolon® |