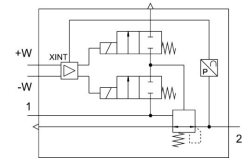


Pressure regulator MS12-LR-G-PE6

Part number: 564888

FESTO



General operating condition

Data sheet

| Feature | Value |
|---|--|
| Size | 12 |
| Series | MS |
| Mounting position | optional |
| Design | Piloted diaphragm regulator |
| Controller function | Output pressure constant Via primary pressure compensation With secondary venting With return flow function |
| Symbol | 00991856 |
| Pressure gauge (ANALOG) or Pressure display (DIGITAL) | With pressure gauge |
| Operating pressure | 0.115 MPa ... 0.8 MPa |
| Operating pressure | 1.15 bar ... 8 bar |
| Pressure regulation range | 0.15 bar ... 6 bar |
| Max. pressure hysteresis | 0.004 MPa |
| Max. pressure hysteresis | 0.04 bar |
| Max. pressure hysteresis | 0.58 psi |
| Flow rate of secondary exhaust | ≤600 l/min |
| Standard nominal flow rate (standardised to DIN 1343) | 12000 l/min ... 21000 l/min |
| Operational voltage range DC | 21.6 V ... 26.4 V |
| Max. electrical power consumption | 3.6 W |
| Max. current consumption | 0.15 A |
| Nominal operating voltage DC | 24 V |
| Residual ripple | 10 % |
| Signal range analogue input | 0 - 10 V |
| KC mark | KC-EMV |
| CE mark (see declaration of conformity) | To EU EMC Directive In accordance with EU RoHS Directive |
| UKCA marking (see declaration of conformity) | To UK RoHS instructions |
| Operating medium | Compressed air to ISO 8573-1:2010 [7:4:4] Inert gases |
| Corrosion resistance class CRC | 2 - Moderate corrosion stress |
| LABS (PWIS) conformity | VDMA24364-B1/B2-L |
| Storage temperature | -10 °C ... 60 °C |
| Media temperature | 10 °C ... 50 °C |
| Degree of protection | IP65 |
| Ambient temperature | 10 °C ... 50 °C |

| Feature | Value |
|------------------------------|--|
| Product weight | 4000 g |
| Type of mounting | Via mounting bracket |
| Pneumatic connection, port 1 | Sub-base |
| Pneumatic connection, port 2 | Sub-base |
| Material covering | PA |
| Note on materials | RoHS-compliant |
| Material underneath cover | Wrought aluminium alloy |
| Material seals | NBR |
| Material spring | Spring steel |
| Material housing | Die-cast aluminium |
| Material membrane | NBR |
| Material valve stem | Wrought aluminium alloy NBR High-alloy stainless steel |