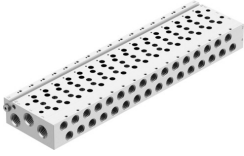


# Manifold rail VABM-L1-14W-G14-16

Part number: 566653

FESTO



 [General operating condition](#)

## Data sheet

Feature	Value
Grid dimension	16 mm
Max. number of valve positions	16
Operating pressure	-0.09 MPa ... 1 MPa
Operating pressure	-0.9 bar ... 10 bar
Approval	RCM trademark c UL us - Recognized (OL)
Corrosion resistance class CRC	2 - Moderate corrosion stress
LABS (PWIS) conformity	VDMA24364-B1/B2-L
Max. tightening torque H-rail mounting	1.5 Nm
Max. tightening torque for valve mounting	0.65 Nm
Max. tightening torque wall mounting	3 Nm
Product weight	1268 g
Pilot air port 12/14	M5
Pilot exhaust port 82/84	M5
Pneumatic connection, port 1	G1/4
Pneumatic connection, port 2	G1/8
Pneumatic connection, port 3	G1/4
Pneumatic connection, port 4	G1/8
Pneumatic connection, port 5	G1/4
Note on materials	RoHS-compliant
Material manifold rail	Wrought aluminium alloy