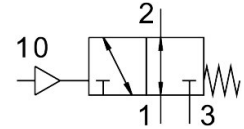


# Pneumatic valve VUWS-L30-M32U-M-G38

Part number: 575593

FESTO



[PDF](#) General operating condition

## Data sheet

| Feature   | Value  |
|---|--|
| Valve function  | 3/2-way, single solenoid, open   |
| Type of actuation                                     | Pneumatic  |
| Valve size  | 31 mm  |
| Standard nominal flow rate (standardised to DIN 1343) | 2300 l/min   |
| pneumatic working port                                | G3/8   |
| Operating pressure                                    | -0.09 MPa ... 1 MPa  |
| Operating pressure                                    | -0.9 bar ... 10 bar  |
| Design  | Piston gate valve  |
| Type of reset   | Mechanical spring  |
| Approval  | c UL us - Recognised (Oil)   |
| Nominal size  | 9.4 mm   |
| Exhaust-air function                                  | Can be throttled   |
| Sealing principle                                     | Soft   |
| Mounting position                                     | Any  |
| Manual override                                       | None   |
| Type of piloting                                      | Direct   |
| Pilot air supply                                      | Internal   |
| Flow direction  | Reversible   |
| Symbol  | 00995556   |
| lap   | Overlap  |
| Pilot pressure  | 0.25 MPa ... 1 MPa   |
| Pilot pressure  | 2.5 bar ... 10 bar   |
| Switching time off                                    | 73 ms  |
| Switching time on                                     | 16 ms  |
| Explosion protection                                  | The information in the certificate must be observed!<br>Zone 1 (ATEX)<br>Zone 2 (ATEX)<br>Zone 21 (ATEX)<br>Zone 22 (ATEX) |
| Operating medium                                      | Compressed air to ISO 8573-1:2010 [7:4:4]  |
| Note on operating and pilot medium                    | Lubricated operation possible (in which case lubricated operation will always be required)                                 |
| Vibration resistance                                  | Transport application test with severity level 2 to FN 942017-4 and EN 60068-2-6   |
| Shock resistance                                      | Shock test with severity level 2 to FN 942017-5 and EN 60068-2-27  |
| Corrosion resistance class CRC                        | 2 - Moderate corrosion stress  |
| LABS (PWIS) conformity                                | VDMA24364-B1/B2-L  |

| Feature   | Value                                     |
|---|---|
| Cleanroom suitability, measured according to ISO 14644-14 | Class 6 according to ISO 14644-1          |
| Media temperature   | -10 °C ... 60 °C                          |
| Pilot medium  | Compressed air to ISO 8573-1:2010 [7:4:4] |
| Ambient temperature                                       | -10 °C ... 60 °C                          |
| Product weight  | 394 g                                     |
| Type of mounting  | On manifold rail<br>With through-hole     |
| Breather connection                                       | Not ducted                                |
| Pilot air port 10   | G1/8                                      |
| Pneumatic connection, port 1                              | G3/8                                      |
| Pneumatic connection, port 2                              | G3/8                                      |
| Pneumatic connection, port 3                              | G3/8                                      |
| Note on materials   | RoHS compliant                            |
| Material seals  | HNBR<br>NBR                               |
| Material housing  | painted                                   |
| Material piston slide                                     | Wrought aluminium alloy                   |
| Material screws   | Nickel-plated steel                       |