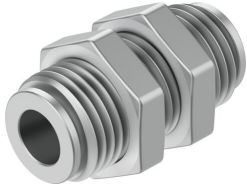


# Push-in bulkhead connector NPQH-H-Q8-E-P10

Part number: 578301

FESTO



 General operating condition

## Data sheet

Feature	Value
Size	Standard
Nominal size	7 mm
Tubing insertion depth	16 mm
Mounting position	Any
Design	Bulkhead
Size of pack	10
Design	Push-pull principle
Symbol	00997424
Operating pressure complete temperature range	-0.095 MPa ... 2 MPa
Operating pressure complete temperature range	-0.95 bar ... 20 bar
Operating pressure complete temperature range	-13.775 psi ... 290 psi
Note on operating pressure	Water: max. 0.6 MPa at 0 - 50 °C
Certificate issuing authority	NSF C0523185
Operating medium	Compressed air to ISO 8573-1:2010 [7:-:-] Water (liquid, ice-free)
Note on operating and pilot medium	Lubricated operation possible
Corrosion resistance class CRC	3 - high corrosion stress
LABS (PWIS) conformity	VDMA24364-B1/B2-L
Cleanroom suitability, measured according to ISO 14644-14	Class 4 according to ISO 14644-1
Suitable for use with food	See declaration of conformity NSF/ANSI 169
Ambient temperature	0 °C ... 150 °C
Product weight	40.6 g
Type of mounting	External hex SW20
Pneumatic connection, port 1	For tubing outer diameter of 8 mm
Pneumatic connection, port 2	For tubing outside diameter of 8 mm
Colour of release ring	Silver
Note on materials	RoHS compliant
Material housing	Brass, chemically nickel-plated
Guard ring material	PEI
Material release ring	Chemically nickel-plated brass
Material nut	Brass, chemically nickel-plated
Material tubing seal	Fluoro rubber
Material tubing clamp component	High-alloy stainless steel
Thrust ring material	PEI