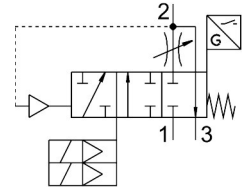


# Soft start/quick exhaust valve MS6-SV-1/2-D-10V24P-2M12-SO-AG

Part number: 8038491

FESTO



[PDF General operating condition](#)

## Data sheet

| Feature  | Value   |
|--|---|
| Series   | MS  |
| Size   | 6   |
| Grid dimension   | 62 mm   |
| Safety function  | Exhaust<br>Prevention of unexpected start-up (pressurisation)   |
| Safety Integrity Level (SIL)   | Exhaust/SIL 3<br>Prevention of unexpected start-up (pressurisation)/SIL 3   |
| Performance Level (PL)   | Exhaust/category 3, performance level d<br>Prevention of unexpected start-up (pressurisation)/category 3, performance level d |
| Note on forced dynamization  | Switching frequency min. 1/month  |
| Design   | Piston seat   |
| lap  | Underlap  |
| Type of actuation  | Electrical  |
| Pilot air supply   | Internal  |
| Sealing principle  | Soft  |
| Exhaust-air function   | Cannot be throttled   |
| Position detection principle   | Magnetic piston principle   |
| Conforms to standard   | DIN EN ISO 13849-1<br>DIN EN ISO 13849-2  |
| Manual override  | None  |
| Type of reset  | Mechanical spring   |
| Type of piloting   | Piloted   |
| Symbol   | 00995704  |
| Valve function   | 3/2-way, single solenoid, closed<br>Soft-start function   |
| Operating pressure   | 0.35 MPa ... 1 MPa  |
| Operating pressure   | 3.5 bar ... 10 bar  |
| Pressure gauge (ANALOG) or Pressure display (DIGITAL)                | With pressure gauge   |
| C value  | 19.3 l/sbar   |
| b value  | 0.21  |
| Standard nominal flow rate (standardised to DIN 1343)                | 4300 l/min  |
| Standard nominal flow rate, exhaust 0.6->0 MPa (6->0 bar, 87->0 psi) | 9000 l/min  |
| Max. switching frequency   | 0.5 Hz  |
| Switching time off   | 40 ms   |
| Switching time on  | 130 ms  |

| Feature                                      | Value  |
|--|--|
| Duty cycle                                   | 100%   |
| Signal status display                        | LED<br>Switching outputs   |
| Characteristic coil data                     | 24 V DC: 1.8 W   |
| Nominal operating voltage DC                 | 24 V   |
| Permissible voltage fluctuations             | +10% / -15%  |
| Operating medium                             | Compressed air to ISO 8573-1:2010 [7:4:4]  |
| Note on operating and pilot medium           | Lubricated operation possible (in which case lubricated operation will always be required) |
| Corrosion resistance class CRC               | 2 - Moderate corrosion stress  |
| Note on materials                            | RoHS compliant   |
| LABS (PWIS) conformity                       | VDMA24364-B1/B2-L  |
| Sound pressure level                         | 75 dB(A)   |
| Degree of protection                         | IP65<br>With plug socket   |
| Media temperature                            | -10 °C ... 50 °C   |
| Ambient temperature                          | -10 °C ... 50 °C   |
| Storage temperature                          | -10 °C ... 50 °C   |
| Shock resistance                             | Shock test with severity level 2 to FN 942017-5 and EN 60068-2-27                          |
| Vibration resistance                         | Transport application test with severity level 2 to FN 942017-4 and EN 60068-2-6           |
| Approval                                     | RCM  |
| KC mark                                      | KC-EMV   |
| CE mark (see declaration of conformity)      | To EU EMC Directive<br>To EC Machinery Directive<br>In accordance with EU RoHS Directive   |
| UKCA marking (see declaration of conformity) | To UK regulations for machines<br>To UK RoHS instructions                                  |
| Type of mounting                             | Either:<br>Inline installation<br>With accessories   |
| Mounting position                            | Any  |
| Product weight                               | 2110 g   |
| Pneumatic connection, port 1                 | G1/2   |
| Pneumatic connection, port 2                 | G1/2   |
| Pneumatic connection, port 3                 | G1   |
| Electrical connection                        | 2x M12<br>according to IEC 61076-2-101   |
| Electrical connection, proximity switch      | 2x cable with plug connector<br>3-pin<br>M12<br>Rotatable thread                           |
| Material housing                             | Die-cast aluminium   |
| Material seals                               | NBR  |
| Material piston rod                          | High-alloy stainless steel   |