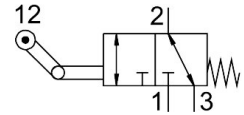


Roller lever valve VMEF-KT-M32-M-G14

Part number: 8047103

FESTO



General operating condition

Data sheet

Feature	Value
Valve function	3/2-way, single solenoid
Type of actuation	Mechanical
Construction width	20 mm
Standard nominal flow rate (standardised to DIN 1343)	870 l/min
pneumatic working port	G1/4
Operating pressure	-0.095 MPa ... 1 MPa
Operating pressure	-0.95 bar ... 10 bar
Design	One-way roller lever Poppet seat
Type of reset	Mechanical spring
Max. stroke limit (hard)	11 mm
Nominal size	6 mm
Instructions on use	Risk of pinching
Sealing principle	Soft
Mounting position	Any
Type of piloting	Direct
Flow direction	Reversible
Symbol	00991348
lap	Zero lap
Max. actuating speed with lateral actuation	0.7 m/s
Max. switching frequency	3 Hz
Cam angle	30 deg
Explosion protection	Zone 1 (ATEX) Zone 2 (ATEX) Zone 21 (ATEX) Zone 22 (ATEX)
Operating medium	Compressed air to ISO 8573-1:2010 [7:-:-]
Note on operating and pilot medium	Lubricated operation possible (in which case lubricated operation will always be required)
Corrosion resistance class CRC	1 - Low corrosion stress
LABS (PWIS) conformity	VDMA24364-B1/B2-L
Media temperature	-10 °C ... 60 °C
Ambient temperature	-10 °C ... 60 °C
Note on ambient temperature	Influence of heat on wear
Actuating force	32.7 N
Product weight	218 g
Type of mounting	With through-hole

Feature	Value
Pneumatic connection, port 1	G1/4
Pneumatic connection, port 2	G1/4
Pneumatic connection, port 3	G1/4
Note on materials	RoHS compliant
Material mounting adaptor	Galvanised steel
Material seals	NBR
Material housing	Anodised wrought aluminium alloy