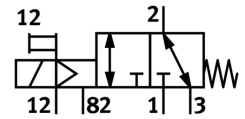
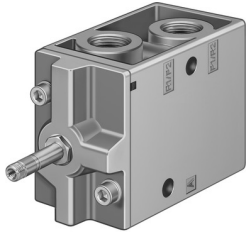


Solenoid valve MFH-3-1/2-S

Part number: 7960

FESTO



[PDF](#) General operating condition

Data sheet

Feature	Value
Valve function	3/2-way, closed, monostable
Type of actuation	Electric
Construction width	52 mm
Standard nominal flow rate (standardised to DIN 1343)	3700 l/min
pneumatic working port	G1/2
Operating voltage	Via solenoid coil, must be ordered separately
Operating pressure	-0.095 MPa ... 1 MPa
Operating pressure	-0.95 bar ... 10 bar
Design	Poppet seat
Type of reset	Mechanical spring
Approval	c UL us - Recognized (OL)
Degree of protection	IP65
Nominal size	14 mm
Grid dimension	69 mm
Exhaust-air function	With flow control option
Sealing principle	Soft
Mounting position	optional
Manual override	Detenting
Type of piloting	Pilot actuated
Pilot air supply	External
Flow direction	Reversible
Symbol	00992879
lap	Underlap
Pilot pressure	0.1 MPa ... 0.8 MPa
Pilot pressure	1 bar ... 8 bar
b value	0.3
Switching time off	90 ms
Switching time on	18 ms
Max. positive test pulse with 0 signal	2200 µs
Max. negative test pulse with 1 signal	3700 µs
Characteristic coil data	See solenoid coil, to be ordered separately
Operating medium	Compressed air to ISO 8573-1:2010 [7:4:4]
Note on operating and pilot medium	Lubricated operation possible (in which case lubricated operation will always be required)
Corrosion resistance class CRC	1 - Low corrosion stress
LABS (PWIS) conformity	VDMA24364-B1/B2-L

Feature	Value
Storage temperature	-20 °C ... 60 °C
Media temperature	-10 °C ... 60 °C
Pilot medium	Compressed air to ISO 8573-1:2010 [7:4:4]
Ambient temperature	-5 °C ... 40 °C
Product weight	1100 g
Electrical connection	Via F coil, to be ordered separately
Type of mounting	Either: On manifold rail With through-hole
Pilot exhaust port 82	M5
Pilot air port 12	G1/8
Pneumatic connection, port 1	G1/2
Pneumatic connection, port 2	G1/2
Pneumatic connection, port 3	G1/2
Note on materials	RoHS-compliant
Material seals	NBR
Material housing	Die-cast aluminium