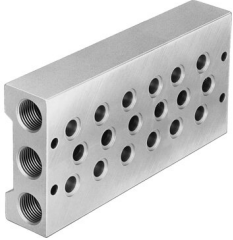


# Manifold block PRS-1/4-6

Part number: 10189

FESTO



[PDF](#) [General operating condition](#)

## Data sheet

Feature	Value
Max. no. of valve positions	6
LABS (PWIS) conformity	VDMA24364-B1/B2-L
Product weight	1230 g
Type of mounting	With through-hole
Pneumatic connection 1	G1/2
Pneumatic connection 3	G1/2
Pneumatic connection 5	G1/2
Material of sub-base	Aluminum