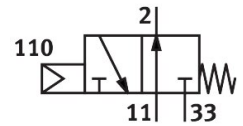


Front panel valve SVOS-3-1/8

Part number: 10191

FESTO



[General operating condition](#)

Data sheet

Feature	Value
Valve function	3/2, open, monostable
Actuation type	Mechanical
Normal nominal flow rate (normalized to DIN 1343)	120 l/min
Pneumatic working port	G1/8
Operating pressure	0.35 MPa ... 0.8 MPa
Operating pressure	3.5 bar ... 8 bar
Structural design	Piston seat
Reset method	Mechanical spring
Sealing principle	Soft
Mounting position	Any
Type of control	Direct
Flow direction	Non-reversible
Symbol	00991107
Lap	Overlap
Explosion prevention and protection	Zone 1 (ATEX) Zone 2 (ATEX) Zone 21 (ATEX) Zone 22 (ATEX)
Operating medium	Compressed air as per ISO 8573-1:2010 [-:--]
LABS (PWIS) conformity	VDMA24364-B1/B2-L
Ambient temperature	-10 °C ... 60 °C
Actuating force	8 N
Type of mounting	With through-hole
Pneumatic connection 1	G1/8
Pneumatic connection 2	G1/8
Pneumatic connection 3	G1/8
Cover material	POM
Seals material	NBR TPE-U(PU)
Housing material	Aluminum