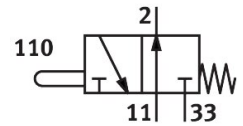


Stem actuated micro valve SO-3-PK-3-B

Part number: 10403

FESTO



[PDF](#) General operating condition

Data sheet

Feature	Value
Valve function	3/2-way, monostable, open
Actuation type	Mechanical
Normal nominal flow rate (normalized to DIN 1343)	60 l/min
Pneumatic working port	PK-3
Operating pressure	-0.95 bar ... 8 bar
Reset method	Mechanical spring
Nominal width	1.8 mm
Type of control	directly
Symbol	00991109
LABS (PWIS) conformity	VDMA24364 Zone III
Ambient temperature	-10 °C ... 60 °C
Actuating force	6 N
Product weight	7 g
Type of mounting	With through-hole
Pneumatic connection 1	PK-3
Pneumatic connection 2	PK-3
Housing material	POM