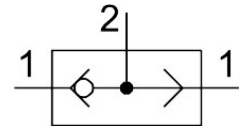


OR gate OS-1/8-NPT

Part number: 10412

FESTO



 [General operating condition](#)

Data sheet

Feature	Value
Valve function	OR function
Pneumatic connection 1	1/8 NPT
Pneumatic connection 2	1/8 NPT
Type of mounting	With through-hole
Normal nominal flow rate (normalized to DIN 1343)	500 l/min
Operating pressure	1 bar ... 10 bar
Ambient temperature	-10 °C ... 60 °C
Housing material	Wrought aluminum alloy
Operating medium	Compressed air as per ISO 8573-1:2010 [7:-:-]
Nominal width	4 mm
Mounting position	Any
Symbol	00991102
Information on operating and pilot media	Operation with oil lubrication possible (required for further use)
LABS (PWIS) conformity	VDMA24364-B1/B2-L
Temperature of medium	-10 °C ... 60 °C
Product weight	45 g
Pneumatic connection 3	1/8 NPT
Note on materials	RoHS-compliant
Seals material	NBR