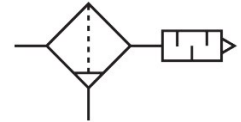


Filter muffler LFU-1/2

Part number: 10494

FESTO



[PDF](#) [General operating condition](#)

Data sheet

Feature	Value
Size	G1/2
Mounting position	Vertical +/- 5°
Grade of filtration	1 µm
Condensate drain	Manually rotating
Symbol	00991531
Operating pressure	0 MPa ... 1.6 MPa
Operating pressure	0 bar ... 16 bar
Operating pressure	0 psi ... 232 psi
Flow rate with respect to atmosphere	6000 l/min
Operating medium	Compressed air as per ISO 8573-1:2010 [7:4:4]
Information on operating and pilot media	Operation with oil lubrication possible (required for further use)
Noise reduction	Reduction by 40 dB
Corrosion resistance class (CRC)	1 - Low corrosion stress
LABS (PWIS) conformity	VDMA24364-B1/B2-L
Noise level	83 dB(A)
Ambient temperature	-10 °C ... 60 °C
Product weight	450 g
Type of mounting	Screw-in
Pneumatic connection	G1/2
Note on materials	RoHS-compliant
Housing material	PP