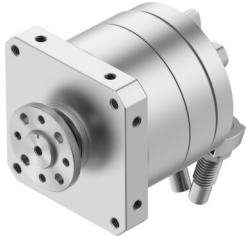


Rotary actuator DSM-T-16-270-CC-FW-A-B

Part number: 1145095

FESTO



 General operating condition

Data sheet

Feature	Value
Size	16
Cushioning angle	12 deg
Adjustment range of swivel angle	0 deg ... 246 deg
Swivel angle	0 deg ... 246 deg
Permissible stop radius	≥17 mm
Cushioning	Pneumatic shock absorber at both ends
Mounting position	Any
Precision adjustment	-3 deg
Mode of operation	Double-acting
Structural design	Rotary vane
Position sensing	For proximity sensor
Symbol	00991265
Operating pressure	0.25 MPa ... 1 MPa
Operating pressure	2.5 bar ... 10 bar
Max. swivel frequency at 6 bar	1 Hz
Repetition accuracy	0.1 deg
Operating medium	Compressed air as per ISO 8573-1:2010 [7:-:-]
Information on operating and pilot media	Operation with oil lubrication possible (required for further use)
Corrosion resistance class (CRC)	0 - No corrosion stress
LABS (PWIS) conformity	VDMA24364-B2-L
Ambient temperature	-10 °C ... 60 °C
Max. stop force	160 N
Max. axial force	30 N
Max. radial force	75 N
Theoretical torque at 6 bar	5 Nm
Permissible mass moment of inertia	0.02 kgm ²
Product weight	700 g
Type of mounting	With internal thread
Pneumatic connection	M5
Note on materials	RoHS-compliant
Drive shaft material	Steel Nickel-plated
Seals material	TPE-U(PU)
Housing material	Aluminum, anodized