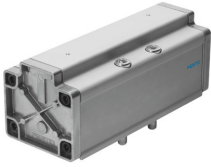


# Pneumatic valve VL-5/3E-3/4-D-4

Part number: 12464

FESTO



[PDF](#) General operating condition

## Data sheet

| Feature   | Value  |
|---|--|
| Valve function                                    | 5/3, exhausted   |
| Actuation type                                    | Pneumatic  |
| Width   | 76 mm  |
| Normal nominal flow rate (normalized to DIN 1343) | 4800 l/min   |
| Pneumatic working port                            | Sub-base, size 4 as per ISO 5599-1<br>G3/4                         |
| Operating pressure                                | -0.9 bar ... 16 bar  |
| Structural design                                 | Piston gate valve  |
| Reset method                                      | Mechanical spring  |
| Nominal width                                     | 18 mm  |
| Width dimension                                   | 82 mm  |
| Exhaust air function                              | With flow control option   |
| Sealing principle                                 | Soft   |
| Mounting position                                 | Any  |
| Conforms to standard                              | ISO 5599-1   |
| Manual override                                   | None   |
| ISO code  | 408  |
| Type of control                                   | Direct   |
| Flow direction                                    | Reversible   |
| Symbol  | 00991021   |
| Lap   | Overlap  |
| Pilot pressure                                    | 3 bar ... 16 bar   |
| Switching time off                                | 170 ms   |
| On switching time                                 | 50 ms  |
| Operating medium                                  | Compressed air as per ISO 8573-1:2010 [7:4:4]                      |
| Information on operating and pilot media          | Operation with oil lubrication possible (required for further use) |
| LABS (PWIS) conformity                            | VDMA24364-B1/B2-L  |
| Temperature of medium                             | -10 °C ... 60 °C   |
| Noise level                                       | 85 dB(A)   |
| Pilot medium                                      | Compressed air as per ISO 8573-1:2010 [7:4:4]                      |
| Ambient temperature                               | -10 °C ... 60 °C   |
| Product weight                                    | 2000 g   |
| Type of mounting                                  | On sub-base<br>With through-hole and screw                         |
| Pilot air port 12                                 | Sub-base, size 4 as per ISO 5599-1                                 |
| Pilot air port 14                                 | Sub-base, size 4 as per ISO 5599-1                                 |

| <b>Feature</b>         | <b>Value</b>                       |
|------------------------|------------------------------------|
| Pneumatic connection 1 | Sub-base, size 4 as per ISO 5599-1 |
| Pneumatic connection 2 | Sub-base, size 4 as per ISO 5599-1 |
| Pneumatic connection 3 | Sub-base, size 4 as per ISO 5599-1 |
| Pneumatic connection 4 | Sub-base, size 4 as per ISO 5599-1 |
| Pneumatic connection 5 | Sub-base, size 4 as per ISO 5599-1 |
| Note on materials      | RoHS-compliant                     |
| Seals material         | NBR                                |
| Housing material       | Aluminum                           |