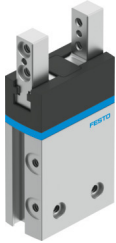


Parallel gripper DHPS-10-A

Part number: 1254040

FESTO



[PDF](#) General operating condition

Data sheet

Feature	Value
Size	10
Stroke per gripper jaw	3 mm
Max. interchangeability	≤0.2 mm
Max. gripper jaw angular play ax, ay	<0.5 deg
Max. gripper jaw backlash Sz	<0.02 mm
Rotational symmetry	≤0.2 mm
Pneumatic gripper repetition accuracy	<0.02 mm
Number of gripper jaws	2
Mounting position	Any
Mode of operation	Double-acting
Gripper function	Parallel
Structural design	Lever Positively driven motion sequence
Guide	Sliding guide
Position sensing	For proximity sensor
Symbol	00991894
Operating pressure	0.2 MPa ... 0.8 MPa
Operating pressure	2 bar ... 8 bar
Operating pressure	29 psi ... 116 psi
Max. operating frequency of pneumatic gripper	4 Hz
Min. opening time at 6 bar	21 ms
Min. closing time at 6 bar	28 ms
Max. mass per external gripper finger	60 g
Operating medium	Compressed air as per ISO 8573-1:2010 [7:4:4]
Information on operating and pilot media	Operation with oil lubrication possible (required for further use)
Corrosion resistance class (CRC)	1 - Low corrosion stress
LABS (PWIS) conformity	VDMA24364-B2-L
Suitability for the production of Li-ion batteries	Metals with more than 5% by mass of copper are excluded from use. This excludes printed circuit boards, cables, electrical connectors and coils.
Ambient temperature	5 °C ... 60 °C
Gripping force per gripper jaw at 6 bar, opening	80 N
Gripping force per gripper jaw at 6 bar, closing	70 N
Gripping force per gripper jaw at 6 bar, opening	39 N
Gripping force per gripper jaw at 6 bar, closing	34.5 N
Mass moment of inertia	0.079 kgcm ²

Feature	Value
Maximum force on gripper jaw Fz, static	60 N
Maximum torque on gripper jaw, Mx static	3 Nm
Maximum torque on gripper jaw, My static	3 Nm
Maximum torque on gripper jaw, Mz static	3 Nm
Relubrication interval for guidance elements	10 MioCyc
Product weight	67 g
Type of mounting	Optionally: With internal thread and centering sleeve Via through-hole and centering sleeve
Pneumatic connection	M3
Note on materials	RoHS-compliant
Cover cap material	PA
Housing material	Wrought aluminum alloy, hard-anodized
Gripper jaw material	High-alloy stainless steel