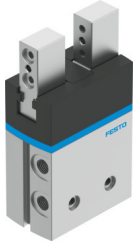


# Parallel gripper DHPS-25-A

Part number: 1254049

FESTO



 [General operating condition](#)

## Data sheet

Feature	Value
Size	25
Stroke per gripper jaw	7.5 mm
Max. interchangeability	≤0.2 mm
Max. gripper jaw angular play ax, ay	<0.5 deg
Max. gripper jaw backlash Sz	<0.02 mm
Rotational symmetry	≤0.2 mm
Pneumatic gripper repetition accuracy	<0.02 mm
Number of gripper jaws	2
Actuator system	Pneumatic
Mounting position	Any
Mode of operation	Double-acting
Gripper function	Parallel
Gripping force backup	None
Structural design	Lever Positively driven motion sequence
Guide	Plain-bearing guide
Position sensing	Via proximity switch
Symbol	00991894
Operating pressure	0.2 MPa ... 0.8 MPa
Operating pressure	2 bar ... 8 bar
Operating pressure	29 psi ... 116 psi
Max. operating frequency of pneumatic gripper	2 Hz
Min. opening time at 6 bar	48 ms
Min. closing time at 6 bar	63 ms
Max. mass per external gripper finger	350 g
Operating medium	Compressed air as per ISO 8573-1:2010 [7:4:4]
Information on operating and pilot media	Operation with oil lubrication possible (required for further use)
Corrosion resistance class (CRC)	1 - Low corrosion stress
LABS (PWIS) conformity	VDMA24364-B2-L
Suitability for the production of Li-ion batteries	Metals with more than 5% by mass of copper are excluded from use. This excludes printed circuit boards, cables, electrical connectors and coils.
Ambient temperature	5 °C ... 60 °C
Gripping force per gripper jaw at 6 bar, opening	500 N
Gripping force per gripper jaw at 6 bar, closing	450 N
Gripping force per gripper jaw at 6 bar, opening	249 N

Feature	Value
Gripping force per gripper jaw at 6 bar, closing	228 N
Mass moment of inertia	3.831 kgcm <sup>2</sup>
Maximum force on gripper jaw Fz, static	350 N
Maximum torque on gripper jaw, Mx static	30 Nm
Maximum torque on gripper jaw, My static	30 Nm
Maximum torque on gripper jaw, Mz static	30 Nm
Relubrication interval for guidance elements	10 MioCyc
Product weight	700 g
Type of mounting	Alternatively: With internal thread and centering sleeve Via through-hole and centering sleeve
Pneumatic connection	G1/8
Note on materials	RoHS compliant
Cover cap material	PA
Housing material	Wrought aluminum alloy, hard-anodized
Gripper jaw material	high-alloy stainless steel