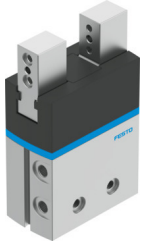


Parallel gripper DHPS-35-A-NC

Part number: 1254054

FESTO



 [General operating condition](#)

Data sheet

| Feature | Value |
|--|--|
| Size | 35 |
| Stroke per gripper jaw | 12.5 mm |
| Max. interchangeability | ≤0.2 mm |
| Max. gripper jaw angular play ax, ay | <0.5 deg |
| Max. gripper jaw backlash Sz | <0.02 mm |
| Rotational symmetry | ≤0.2 mm |
| Pneumatic gripper repetition accuracy | <0.02 mm |
| Number of gripper jaws | 2 |
| Actuator system | Pneumatic |
| Mounting position | Any |
| Mode of operation | Double-acting |
| Gripper function | Parallel |
| Gripping force backup | During closing |
| Structural design | Lever Positively driven motion sequence |
| Guide | Sliding guide |
| Position sensing | For proximity sensor |
| Symbol | 00991895 |
| Operating pressure | 0.4 MPa ... 0.8 MPa |
| Operating pressure | 4 bar ... 8 bar |
| Operating pressure | 58 psi ... 116 psi |
| Max. operating frequency of pneumatic gripper | 2 Hz |
| Min. opening time at 6 bar | 131 ms |
| Min. closing time at 6 bar | 99 ms |
| Max. mass per external gripper finger | 450 g |
| Operating medium | Compressed air as per ISO 8573-1:2010 [7:4:4] |
| Information on operating and pilot media | Operation with oil lubrication possible (required for further use) |
| Corrosion resistance class (CRC) | 1 - Low corrosion stress |
| LABS (PWIS) conformity | VDMA24364-B2-L |
| Suitability for the production of Li-ion batteries | Metals with more than 5% by mass of copper are excluded from use. This excludes printed circuit boards, cables, electrical connectors and coils. |
| Ambient temperature | 5 °C ... 60 °C |
| Mass moment of inertia | 12.726 kgcm ² |
| Maximum force on gripper jaw Fz, static | 450 N |
| Maximum torque on gripper jaw, Mx static | 50 Nm |

| Feature | Value |
|--|---|
| Maximum torque on gripper jaw, My static | 50 Nm |
| Maximum torque on gripper jaw, Mz static | 50 Nm |
| Relubrication interval for guidance elements | 10 MioCyc |
| Product weight | 1345 g |
| Type of mounting | Optionally: With internal thread and centering sleeve Via through-hole and centering sleeve |
| Pneumatic connection | G1/8 |
| Note on materials | RoHS-compliant |
| Cover cap material | PA |
| Housing material | Wrought aluminum alloy, hard-anodized |
| Gripper jaw material | High-alloy stainless steel |