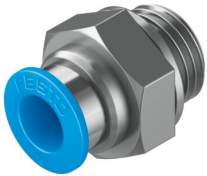


Push-in fitting QS-G1/4-8-50

Part number: 132040

FESTO



 General operating condition

Data sheet

| Feature | Value |
|---|--|
| Size | Standard |
| Nominal width | 7 mm |
| Tubing insertion depth | 18.2 mm |
| Type of seal on screwed plug | Sealing ring |
| Mounting position | Any |
| Design | Straight design |
| Pack size | 50 |
| Structural design | Push-pull principle |
| Operating pressure for entire temperature range | -0.095 MPa ... 0.6 MPa |
| Operating pressure for entire temperature range | -0.95 bar ... 6 bar |
| Operating pressure for entire temperature range | -13.775 psi ... 87 psi |
| Temperature-dependent operating pressure | -0.095 MPa ... 1.4 MPa |
| Temperature-dependent operating pressure | -0.95 bar ... 14 bar |
| Temperature-dependent operating pressure | -13.775 psi ... 203 psi |
| Information on operating pressure | Water: max. 0.6 MPa at max. 50 °C |
| Operating medium | Compressed air as per ISO 8573-1:2010 [7:-:-] Water (liquid, ice-free) |
| Information on operating and pilot media | Lubricated operation possible Water: G-thread only possible with sealing ring type OL as additional accessory |
| Corrosion resistance class (CRC) | 1 - Low corrosion stress |
| LABS (PWIS) conformity | VDMA24364-B1/B2-L |
| Cleanroom suitability, measured according to ISO 14644-14 | Class 4 according to ISO 14644-1 |
| Ambient temperature | -10 °C ... 80 °C |
| Nominal tightening torque | 9 Nm |
| Tolerance for nominal tightening torque | ±20% |
| Product weight | 15 g |
| Type of mounting | External hexagon SW17 |
| Pneumatic connection 1 | External thread G1/4 |
| Pneumatic connection 2 | for pneumatic tubing outside diameter 8 mm |
| Releasing ring color | Blue |
| Note on materials | RoHS compliant |
| Housing material | Brass, nickel-plated |
| Releasing ring material | POM |
| Material of tubing seal | NBR |
| Material of tube retaining claw | high-alloy stainless steel |