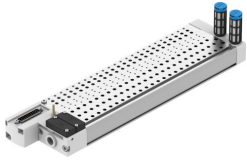


Manifold rail VABM-C8-12E-G14-24-M1-L

Part number: 1361876

FESTO



 [General operating condition](#)

Data sheet

Feature	Value
Width dimension	12 mm
Max. no. of valve positions	24
Corrosion resistance class (CRC)	0 - No corrosion stress
LABS (PWIS) conformity	VDMA24364-B1/B2-L
Max. tightening torque for valve mounting	0.6 Nm
Max. tightening torque for wall mounting	5 Nm
Product weight	1500 g
Pneumatic connection 1	G1/4
Pneumatic connection 3	G1/4
Pneumatic connection 5	G1/4
Note on materials	RoHS-compliant
Manifold rail material	Wrought aluminum alloy