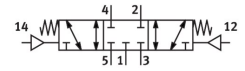


# Pneumatic valve VL-5/3G-1/4-B

Part number: 14298

FESTO



[PDF](#) General operating condition

## Data sheet

| Feature   | Value  |
|---|--|
| Valve function                                    | 5/3, closed  |
| Actuation type                                    | Pneumatic  |
| Width   | 32 mm  |
| Normal nominal flow rate (normalized to DIN 1343) | 1600 l/min   |
| Pneumatic working port                            | G1/4   |
| Operating pressure                                | -0.09 MPa ... 1 MPa  |
| Operating pressure                                | -0.9 bar ... 10 bar  |
| Structural design                                 | Piston gate valve  |
| Reset method                                      | Mechanical spring  |
| Nominal width                                     | 10 mm  |
| Width dimension                                   | 33 mm  |
| Exhaust air function                              | With flow control option   |
| Sealing principle                                 | Soft   |
| Mounting position                                 | Any  |
| Manual override                                   | None   |
| Type of control                                   | Direct   |
| Pilot air supply port                             | External   |
| Flow direction                                    | Reversible   |
| Symbol  | 00991018   |
| Lap   | Overlap  |
| Pilot pressure MPa                                | 0.3 MPa ... 1 MPa  |
| Pilot pressure                                    | 3 bar ... 10 bar   |
| b-value   | 0.38   |
| C value   | 6.35 l/sbar  |
| Max. switching frequency                          | 3 Hz   |
| Switching time off                                | 26 ms  |
| On switching time                                 | 6 ms   |
| Changeover time                                   | 30 ms  |
| Operating medium                                  | Compressed air as per ISO 8573-1:2010 [7:4:4]                      |
| Information on operating and pilot media          | Operation with oil lubrication possible (required for further use) |
| Corrosion resistance class (CRC)                  | 1 - Low corrosion stress   |
| LABS (PWIS) conformity                            | VDMA24364-B1/B2-L  |
| Storage temperature                               | -40 °C ... 60 °C   |
| Temperature of medium                             | -10 °C ... 60 °C   |
| Pilot medium                                      | Compressed air as per ISO 8573-1:2010 [7:4:4]                      |
| Ambient temperature                               | -10 °C ... 60 °C   |

| <b>Feature</b>         | <b>Value</b>                    |
|------------------------|---------------------------------|
| Product weight         | 375 g                           |
| Type of mounting       | On PR rail<br>With through-hole |
| Pilot air port 12      | G1/8                            |
| Pilot air port 14      | G1/8                            |
| Pneumatic connection 1 | G1/4                            |
| Pneumatic connection 2 | G1/4                            |
| Pneumatic connection 3 | G1/4                            |
| Pneumatic connection 4 | G1/4                            |
| Pneumatic connection 5 | G1/4                            |
| Note on materials      | RoHS-compliant                  |
| Seals material         | NBR                             |
| Housing material       | Die-cast aluminum               |