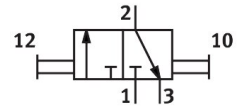
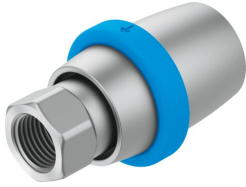


# Hand slide valve VBOH-32-G38

Part number: 1482679

FESTO



 General operating condition

## Data sheet

| Feature   | Value  |
|---|--|
| Valve function                                    | 3/2, bistable  |
| Pneumatic connection 1                            | G3/8   |
| Pneumatic connection 2                            | G3/8   |
| Actuation type                                    | Manual   |
| Type of mounting                                  | Screw-in   |
| Normal nominal flow rate (normalized to DIN 1343) | 2201 l/min   |
| Nominal width                                     | 9.9 mm   |
| Operating pressure                                | -0.095 MPa ... 1.2 MPa   |
| Operating pressure                                | -0.95 bar ... 12 bar   |
| Ambient temperature                               | -10 °C ... 80 °C   |
| Housing material                                  | Wrought aluminum alloy, anodized   |
| Operating medium                                  | Compressed air as per ISO 8573-1:2010 [7:4:4]  |
| Width dimension                                   | 39.5 mm  |
| Application note                                  | Please only screw in fittings with a cylindrical thread. Installing tapered threads can damage the housing and cause the sleeve to jam or malfunction. |
| Sealing principle                                 | Soft   |
| Mounting position                                 | Any  |
| Structural design                                 | Sleeve gate valve  |
| Type of control                                   | Direct   |
| Symbol  | 00991286   |
| Information on operating and pilot media          | Operation with oil lubrication possible (required for further use)   |
| Corrosion resistance class (CRC)                  | 2 - Moderate corrosion stress  |
| LABS (PWIS) conformity                            | VDMA24364-B2-L   |
| Temperature of medium                             | -10 °C ... 80 °C   |
| Actuating force                                   | 41 N   |
| Product weight                                    | 70 g   |
| Material of screwed plug                          | Anodized wrought aluminum alloy  |
| Note on materials                                 | RoHS-compliant   |
| Seals material                                    | NBR  |