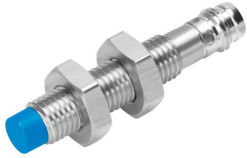


# Proximity sensor SIEN-M8NB-PS-S-L

Part number: 150395

FESTO



[General operating condition](#)

## Data sheet

| Feature  | Value   |
|--|---|
| Conforms to standard                           | EN 60947-5-2  |
| Symbol   | 00991701  |
| Certification                                  | RCM compliance mark<br>c UL us - Listed (OL)  |
| CE marking (see declaration of conformity)     | As per EU EMC directive<br>As per EU RoHS directive   |
| UKCA marking (see declaration of conformity)   | according to UK RoHS regulations (UK-R)   |
| Rated operating distance                       | 2.5 mm  |
| Assured operating distance                     | 2.03 mm   |
| Reduction factors                              | Aluminum = 0.25<br>Stainless steel St 18/8 = 0.7<br>Copper = 0.2<br>Brass = 0.35<br>Steel St 37 = 1.0 |
| Ambient temperature                            | -25 °C ... 70 °C  |
| Repetition accuracy under constant conditions  | 0.12 mm   |
| Switching output                               | PNP   |
| Switching element function                     | N/O contact   |
| Hysteresis                                     | ≤0.12 mm  |
| Max. switching frequency                       | 3000 Hz   |
| Max. output current                            | 200 mA  |
| Voltage drop                                   | ≤2 V  |
| Inductive protective circuit                   | Installed   |
| Short-circuit protection                       | Pulsed  |
| DC operating voltage range                     | 10 V ... 30 V   |
| Residual ripple                                | ± 10%   |
| Idle current                                   | ≤10 mA  |
| Reverse polarity protection                    | for all electrical connections  |
| Electrical connection 1, connection type       | Plug  |
| Electrical connection 1, connection technology | M8x1 A-coded as per EN 61076-2-104  |
| Electrical connection 1, number of pins/wires  | 3   |
| Electrical connection 1, type of mounting      | not rotatable   |
| Electrical connection 1, type of mounting      | Compatible with snap-locking<br>Compatible with rotatable screw-type lock                             |
| Size   | M8x1  |
| Type of mounting                               | With lock nut   |
| Mounting type                                  | Not flush   |
| Product weight                                 | 18 g  |

| <b>Feature</b>                                       | <b>Value</b>  |
|--|---|
| Housing material                                     | PBTP<br>High-alloy stainless steel<br>Chrome-plated |
| Switching status indication                          | LED yellow  |
| Ambient temperature with flexible cable installation | -5 °C ... 70 °C                                     |
| Degree of protection                                 | IP65<br>IP67  |
| Corrosion resistance class (CRC)                     | 2 - Moderate corrosion stress                       |
| LABS (PWIS) conformity                               | VDMA24364-B2-L                                      |
| Selection of additional sensor information           | With standard switching distance                    |
| Electrical output                                    | PNP   |
| Selection of sensor version                          | Standard  |