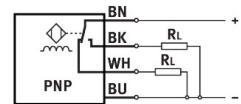
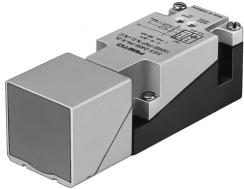


Proximity sensor SIES-Q40B-PA-X-2L

Part number: 150492

FESTO



[PDF](#) [General operating condition](#)

Data sheet

Feature	Value
Conforms to standard	EN 60947-5-2
Symbol	00991612
Certification	RCM compliance mark c UL us - Listed (OL)
CE marking (see declaration of conformity)	As per EU EMC directive
Rated operating distance	15 mm
Assured operating distance	12.2 mm
Reduction factors	Aluminum = 0.3 Stainless steel St 18/8 = 0.7 Copper = 0.25 Brass = 0.3 Steel St 37 = 1.0
Ambient temperature	-25 °C ... 85 °C
Repetition accuracy	0.75 mm
Switching output	PNP
Switching element function	Antivalent
Max. switching frequency	100 Hz
Max. switching frequency DC	100 Hz
Max. output current as a function of temperature	200 mA at ≤ 50 °C 150 mA at ≤ 85 °C
Voltage drop	3.5 V
Short-circuit protection	Pulsed
DC operating voltage range	10 V ... 30 V
Residual ripple	10 %
Idle current	≤ 40 mA
Reverse polarity protection	for all electrical connections
Electrical connection	Screw terminal
Material of plug housing	PA PBT
Cable fitting	M20x1.5
Approved cable diameter	7.5 mm ... 12.5 mm
Size	40x40x120 mm
Type of mounting	With through-hole
Mounting type	Flush
Product weight	230 g
Housing material	PET
Ready status indication	LED green
Switching status indication	LED yellow

Feature	Value
Degree of protection	IP65
LABS (PWIS) conformity	VDMA24364-B2-L
Selection of additional sensor information	Special design
Electrical output	PNP
Selection of sensor version	Standard