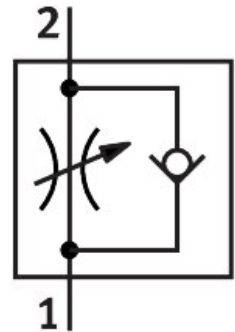



One-way flow control valve GRLA-1/8-PK-3-B

Part number: 151166

FESTO



 [General operating condition](#)

Data sheet

Feature	Value
Valve function	Exhaust air flow control non-return function
Pneumatic connection 1	PK-3 with union nut
Pneumatic connection 2	G1/8
Adjusting element	Slotted screw
Type of mounting	Screw-in
Standard nominal flow rate in flow control direction	110 l/min
Standard nominal flow rate in non-return direction	100 l/min ... 110 l/min
Ambient temperature	-10 °C ... 60 °C
Maritime classification	See certificate
Explosion prevention and protection	Observe the information on the certificate Zone 1 (ATEX) Zone 2 (ATEX) Zone 21 (ATEX) Zone 22 (ATEX)
Mounting position	Any
Symbol	00991452
Operating pressure for entire temperature range	0.3 bar ... 10 bar
Standard flow rate in flow control direction 6 → 0 bar	162 l/min
Standard flow rate in non-return direction at 6 → 0 bar	145 l/min ... 165 l/min
Operating medium	Compressed air as per ISO 8573-1:2010 [7:4:4]
Information on operating and pilot media	Operation with oil lubrication possible (required for further use)
LABS (PWIS) conformity	VDMA24364-B1/B2-L
Cleanroom suitability, measured according to ISO 14644-14	Class 4 according to ISO 14644-1
Temperature of medium	-10 °C ... 60 °C
Max. tightening torque	6 Nm
Product weight	22 g
Material of screwed plug	Wrought aluminum alloy
Note on materials	RoHS-compliant
Seals material	NBR
Material of adjusting screw	Brass

Feature	Value
Swivel joint material	Die-cast zinc