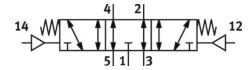


Pneumatic valve VL-5/3E-D-3-C

Part number: 151868

FESTO



[PDF](#) General operating condition

Data sheet

| Feature | Value |
|---|--|
| Valve function | 5/3 exhausted |
| Actuation type | Pneumatic |
| Width | 65 mm |
| Normal nominal flow rate (normalized to DIN 1343) | 4600 l/min |
| Pneumatic working port | Sub-base, size 3 as per ISO 5599-1 G1/2 |
| Operating pressure | -0.09 MPa ... 1.6 MPa |
| Operating pressure | -0.9 bar ... 16 bar |
| Structural design | Piston gate valve |
| Reset method | Mechanical spring |
| Certification | c UL us - recognized (OL) |
| Nominal width | 14.5 mm |
| Width dimension | 71 mm |
| Exhaust air function | Adjustable |
| Sealing principle | Soft |
| Mounting position | Any |
| Conforms to standard | ISO 5599-1 |
| Manual override | None |
| ISO code | 308 |
| Type of control | directly |
| Flow direction | Reversible |
| Symbol | 00991021 |
| Lap | Positive overlap |
| Pilot pressure MPa | 0.3 MPa ... 1.6 MPa |
| Pilot pressure | 3 bar ... 16 bar |
| Switching time off | 63 ms |
| On switching time | 18 ms |
| Operating medium | Compressed air as per ISO 8573-1:2010 [7:4:4] |
| Information on operating and pilot media | Operation with oil lubrication possible (required for further use) |
| Vibration resistance | Transport application test with severity level 1 as per FN 942017-4 and EN 60068-2-6 |
| Shock resistance | Shock test with severity level 2 as per FN 942017-5 and EN 60068-2-27 |
| LABS (PWIS) conformity | VDMA24364-B1/B2-L |
| Temperature of medium | -10 °C ... 60 °C |
| Noise level | 85 dB(A) |
| Pilot medium | Compressed air as per ISO 8573-1:2010 [7:4:4] |

| Feature | Value |
|------------------------|--|
| Ambient temperature | -10 °C ... 60 °C |
| Product weight | 910 g |
| Type of mounting | On sub-base With through-hole and screw |
| Pilot air port 12 | Sub-base, size 3 as per ISO 5599-1 |
| Pilot air port 14 | Sub-base, size 3 as per ISO 5599-1 |
| Pneumatic connection 1 | Sub-base, size 3 as per ISO 5599-1 |
| Pneumatic connection 2 | Sub-base, size 3 as per ISO 5599-1 |
| Pneumatic connection 3 | Sub-base, size 3 as per ISO 5599-1 |
| Pneumatic connection 4 | Sub-base, size 3 as per ISO 5599-1 |
| Pneumatic connection 5 | Sub-base, size 3 as per ISO 5599-1 |
| Note on materials | RoHS compliant |
| Seals material | HNBR NBR |
| Housing material | Die-cast aluminum |