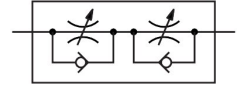


# One-way flow control valve GR-1/8X2-B

Part number: 152612

FESTO



 General operating condition

## Data sheet

Feature	Value
Valve function	Flow control non-return function
Pneumatic connection 1	G1/8
Pneumatic connection 2	G1/8
Adjusting element	Knurled screw
Type of mounting	With through-hole
Standard nominal flow rate in flow control direction	205 l/min
Standard nominal flow rate in non-return direction	190 l/min
Operating pressure	0.5 bar ... 10 bar
Ambient temperature	-20 °C ... 60 °C
Housing material	Wrought aluminum alloy
Explosion prevention and protection	Observe the information on the certificate Zone 1 (ATEX) Zone 2 (ATEX) Zone 21 (ATEX) Zone 22 (ATEX)
Mounting position	Any
Symbol	00991931
Operating medium	Compressed air as per ISO 8573-1:2010 [7:4:4]
Information on operating and pilot media	Operation with oil lubrication possible (required for further use)
LABS (PWIS) conformity	VDMA24364-B1/B2-L
Temperature of medium	-20 °C ... 60 °C
Nominal width	3 mm
Product weight	54 g
Note on materials	RoHS-compliant
Seals material	NBR
Sleeve material	POM
Material of adjusting screw	High-alloy steel
Nut material	Wrought aluminum alloy