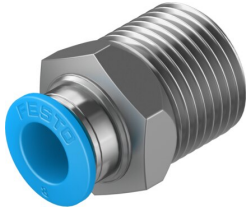


Push-in fitting QS-3/8-8

Part number: 153006

FESTO



 General operating condition

Data sheet

Feature	Value
Size	Standard
Nominal width	7 mm
Tubing insertion depth	18.2 mm
Type of seal on screwed plug	Coating
Mounting position	Any
Design	Straight design
Pack size	10
Structural design	Push-pull principle
Operating pressure for entire temperature range	-0.095 MPa ... 0.6 MPa
Operating pressure for entire temperature range	-0.95 bar ... 6 bar
Operating pressure for entire temperature range	-13.775 psi ... 87 psi
Temperature-dependent operating pressure	-0.095 MPa ... 1.4 MPa
Temperature-dependent operating pressure	-0.95 bar ... 14 bar
Temperature-dependent operating pressure	-13.775 psi ... 203 psi
Information on operating pressure	Water: max. 0.6 MPa at max. 50 °C
Operating medium	Compressed air as per ISO 8573-1:2010 [7:-:-] Water (liquid, ice-free)
Information on operating and pilot media	Operation with oil lubrication possible
Corrosion resistance class (CRC)	1 - Low corrosion stress
LABS (PWIS) conformity	VDMA24364-B1/B2-L
Cleanroom suitability, measured according to ISO 14644-14	Class 4 according to ISO 14644-1
Ambient temperature	-10 °C ... 80 °C
Product weight	25 g
Type of mounting	External hexagon, AF 17
Pneumatic connection 1	External thread R3/8
Pneumatic connection 2	for pneumatic tubing outside diameter 8 mm
Releasing ring color	Blue
Note on materials	RoHS-compliant
Housing material	Brass, nickel-plated
Releasing ring material	POM
Material of tubing seal	NBR
Material of tube retaining claw	High-alloy stainless steel