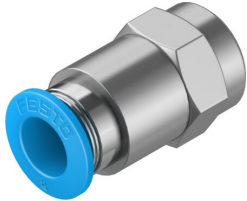


# Push-in fitting QSF-1/8-8-B

Part number: 153025

FESTO



 General operating condition

## Data sheet

| Feature   | Value   |
|---|---|
| Size  | Standard  |
| Nominal width                                   | 7 mm  |
| Tubing insertion depth                          | 18.2 mm   |
| Type of seal on screwed plug                    | Coating   |
| Mounting position                               | Any   |
| Design  | Straight design   |
| Pack size                                       | 10  |
| Structural design                               | Push-pull principle   |
| Operating pressure for entire temperature range | -0.095 MPa ... 0.6 MPa  |
| Operating pressure for entire temperature range | -0.95 bar ... 6 bar   |
| Operating pressure for entire temperature range | -13.775 psi ... 87 psi  |
| Temperature-dependent operating pressure        | -0.095 MPa ... 1.4 MPa  |
| Temperature-dependent operating pressure        | -0.95 bar ... 14 bar  |
| Temperature-dependent operating pressure        | -13.775 psi ... 203 psi   |
| Information on operating pressure               | Water: max. 0.6 MPa at max. 50 °C   |
| Operating medium                                | Compressed air as per ISO 8573-1:2010 [7:-:-]<br>Water (liquid, ice-free) |
| Information on operating and pilot media        | Lubricated operation possible   |
| Corrosion resistance class (CRC)                | 1 - Low corrosion stress  |
| LABS (PWIS) conformity                          | VDMA24364-B1/B2-L   |
| Ambient temperature                             | -10 °C ... 80 °C  |
| Nominal tightening torque                       | 7 Nm  |
| Tolerance for nominal tightening torque         | ±20%  |
| Product weight                                  | 16 g  |
| Type of mounting                                | External hexagon SW14   |
| Pneumatic connection 1                          | Internal thread G1/8  |
| Pneumatic connection 2                          | for pneumatic tubing outside diameter 8 mm                                |
| Releasing ring color                            | Blue  |
| Note on materials                               | RoHS compliant  |
| Housing material                                | Brass, nickel-plated  |
| Releasing ring material                         | POM   |
| Material of tubing seal                         | NBR   |
| Material of tube retaining claw                 | high-alloy stainless steel  |