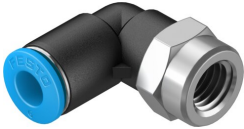


# Push-in L-fitting QSLF-1/8-6-B

Part number: 153274

FESTO



 General operating condition

## Data sheet

| Feature   | Value   |
|---|---|
| Size  | Standard  |
| Nominal width   | 4.2 mm  |
| Tubing insertion depth                                    | 17 mm   |
| Mounting position   | Any   |
| Design  | L-shape   |
| Pack size   | 10  |
| Structural design   | Push-pull principle   |
| Operating pressure for entire temperature range           | -0.095 MPa ... 0.6 MPa  |
| Operating pressure for entire temperature range           | -0.95 bar ... 6 bar   |
| Operating pressure for entire temperature range           | -13.775 psi ... 87 psi  |
| Temperature-dependent operating pressure                  | -0.095 MPa ... 1.4 MPa  |
| Temperature-dependent operating pressure                  | -0.95 bar ... 14 bar  |
| Temperature-dependent operating pressure                  | -13.775 psi ... 203 psi   |
| Information on operating pressure                         | Water: max. 0.6 MPa at max. 50 °C   |
| Operating medium  | Compressed air as per ISO 8573-1:2010 [7:-:-]<br>Water (liquid, ice-free) |
| Information on operating and pilot media                  | Operation with oil lubrication possible                                   |
| Corrosion resistance class (CRC)                          | 1 - Low corrosion stress  |
| LABS (PWIS) conformity                                    | VDMA24364-B1/B2-L   |
| Cleanroom suitability, measured according to ISO 14644-14 | Class 4 according to ISO 14644-1  |
| Ambient temperature                                       | -10 °C ... 80 °C  |
| Nominal tightening torque                                 | 7 Nm  |
| Tolerance for nominal tightening torque                   | ± 20%   |
| Product weight  | 15 g  |
| Type of mounting  | External hexagon, AF 14   |
| Pneumatic connection 1                                    | Internal thread G1/8  |
| Pneumatic connection 2                                    | for pneumatic tubing outside diameter 6 mm                                |
| Releasing ring color                                      | Blue  |
| Material of screwed plug                                  | Brass, nickel-plated  |
| Note on materials   | RoHS-compliant  |
| Housing material  | PBT   |
| Releasing ring material                                   | POM   |
| Material of tubing seal                                   | NBR   |
| Material of tube retaining claw                           | High-alloy stainless steel  |