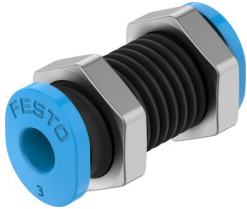


Push-in bulkhead connector QSMS-3

Part number: 153375

FESTO



 General operating condition

Data sheet

Feature	Value
Size	Mini
Nominal width	1.7 mm
Tubing insertion depth	9.5 mm
Mounting position	Any
Design	Bulkhead
Pack size	10
Structural design	Push-pull principle
Operating pressure for entire temperature range	-0.095 MPa ... 0.6 MPa
Operating pressure for entire temperature range	-0.95 bar ... 6 bar
Operating pressure for entire temperature range	-13.775 psi ... 87 psi
Temperature-dependent operating pressure	-0.095 MPa ... 1.4 MPa
Temperature-dependent operating pressure	-0.95 bar ... 14 bar
Temperature-dependent operating pressure	-13.775 psi ... 203 psi
Operating medium	Compressed air as per ISO 8573-1:2010 [7:-:-]
Information on operating and pilot media	Operation with oil lubrication possible
Corrosion resistance class (CRC)	1 - Low corrosion stress
LABS (PWIS) conformity	VDMA24364-B1/B2-L
Ambient temperature	-10 °C ... 80 °C
Product weight	3 g
Pneumatic connection 1	for pneumatic tubing outside diameter 3 mm
Pneumatic connection 2	for pneumatic tubing outside diameter 3 mm
Releasing ring color	Blue
Note on materials	RoHS-compliant
Housing material	Aluminum, anodized
Releasing ring material	POM
Nut material	Brass, nickel-plated
Material of tubing seal	NBR
Material of tube retaining claw	High-alloy stainless steel