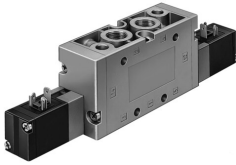


Air solenoid valve

JMVH-5-3/8-S-B

Part number: 15343

FESTO



[General operating condition](#)

Data sheet

Feature	Value
Valve function	5/2, bistable
Actuation type	Electrical
Width	40 mm
Normal nominal flow rate (normalized to DIN 1343)	2000 l/min
Pneumatic working port	G3/8
Operating voltage	24V DC
Operating pressure	-0.09 MPa ... 1 MPa
Operating pressure	-0.9 bar ... 10 bar
Structural design	Piston gate valve
Nominal width	12 mm
Width dimension	41 mm
Exhaust air function	With flow control option
Sealing principle	Soft
Mounting position	Any
Manual override	Non-detenting
Type of control	Pilot-controlled
Pilot air supply port	External
Flow direction	Reversible
Symbol	00991016
Lap	Overlap
Pilot pressure MPa	0.2 MPa ... 1 MPa
Pilot pressure	2 bar ... 10 bar
Max. switching frequency	3 Hz
Changeover time	17 ms
Max. positive test pulse with 0 signal	2200 µs
Max. negative test pulse on 1 signal	3700 µs
Coil characteristics	24 V DC: 2.5 W
Permissible voltage fluctuations	+/- 10 %
Operating medium	Compressed air as per ISO 8573-1:2010 [7:4:4]
Information on operating and pilot media	Operation with oil lubrication possible (required for further use)
Corrosion resistance class (CRC)	1 - Low corrosion stress
LABS (PWIS) conformity	VDMA24364-B1/B2-L
Storage temperature	-40 °C ... 60 °C
Temperature of medium	-5 °C ... 50 °C
Pilot medium	Compressed air as per ISO 8573-1:2010 [7:4:4]
Ambient temperature	-5 °C ... 50 °C

Feature	Value
Product weight	900 g
Type of mounting	On PR rail With through-hole
Auxiliary pilot air port 12	G1/8
Auxiliary pilot air port 14	G1/8
Pilot exhaust air port 82	M5
Pilot exhaust air port 84	M5
Pilot air port 12	G1/8
Pilot air port 14	G1/8
Pneumatic connection 1	G3/8
Pneumatic connection 2	G3/8
Pneumatic connection 3	G3/8
Pneumatic connection 4	G3/8
Pneumatic connection 5	G3/8
Note on materials	RoHS-compliant
Seals material	NBR
Housing material	Die-cast aluminum