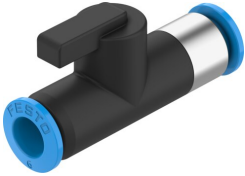


# Ball valve QH-QS-4

Part number: 153483

FESTO



[PDF](#) General operating condition

## Data sheet

Feature	Value
Valve function	2/2 bistable
Pneumatic connection 1	QS-4
Pneumatic connection 2	QS-4
Actuation type	Manual
Type of mounting	Line installation
Normal nominal flow rate (normalized to DIN 1343)	148 l/min
Nominal width	2.5 mm
Operating pressure	-0.1 MPa ... 1 MPa
Operating pressure	-1 bar ... 10 bar
Ambient temperature	0 °C ... 60 °C
Housing material	PBTP
Operating medium	Compressed air as per ISO 8573-1:2010 [7:-:-]
Sealing principle	Soft
Structural design	Ball valve
Symbol	00991458
Information on operating and pilot media	Operation with oil lubrication possible (required for further use)
LABS (PWIS) conformity	VDMA24364-B1/B2-L
Product weight	12 g
Note on materials	RoHS-compliant