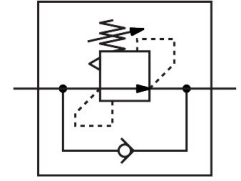


Differential pressure regulator LRL-1/2-QS-12

Part number: 153521

FESTO



 General operating condition

Data sheet

Feature	Value
Controller function	Constant differential pressure With return flow characteristic
Pneumatic connection 1	R1/2
Pneumatic connection 2	QS-12
Type of mounting	Screw-in
Nominal flow rate, open	760 l/min
Pressure regulation range	2 bar ... 6 bar
Inlet pressure 1 MPa	0 MPa ... 0.9 MPa
Inlet pressure 1	0 bar ... 9 bar
Inlet pressure 1 psi	0 psi ... 130.5 psi
Ambient temperature	0 °C ... 60 °C
Housing material	PBT-reinforced
Operating medium	Compressed air as per ISO 8573-1:2010 [7:-:-]
Actuator lock	Counter-locking
Mounting position	Any
Structural design	Directly controlled piston regulator with continuous compressed air supply
Symbol	00991535
Nominal flow rate, closed	730 l/min
Information on operating and pilot media	Operation with oil lubrication possible (required for further use)
LABS (PWIS) conformity	VDMA24364-B1/B2-L
Product weight	110 g
Material of screwed plug	Brass, nickel-plated
Note on materials	RoHS compliant
Material of threaded seal	PTFE