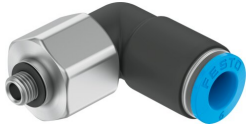


Push-in L-fitting, rotatable QSRL-M5-4

Part number: 153529

FESTO



 General operating condition

Data sheet

Feature	Value
Size	Standard
Nominal width	1.4 mm
Tubing insertion depth	14.9 mm
Type of seal on screwed plug	Sealing ring
Mounting position	Any
Design	L-shape
Pack size	1
Structural design	Push-pull principle
Operating pressure for entire temperature range	-0.095 MPa ... 0.6 MPa
Operating pressure for entire temperature range	-0.95 bar ... 6 bar
Operating pressure for entire temperature range	-13.775 psi ... 87 psi
Temperature-dependent operating pressure	-0.095 MPa ... 1.4 MPa
Temperature-dependent operating pressure	-0.95 bar ... 14 bar
Temperature-dependent operating pressure	-13.775 psi ... 203 psi
Max. rotational speed	500 rpm
Operating medium	Compressed air as per ISO 8573-1:2010 [7:-:-]
Information on operating and pilot media	Operation with oil lubrication possible
Corrosion resistance class (CRC)	1 - Low corrosion stress
LABS (PWIS) conformity	VDMA24364-B1/B2-L
Ambient temperature	0 °C ... 60 °C
Max. radial torque	0.006 Nm
Nominal tightening torque	1.2 Nm
Tolerance for nominal tightening torque	± 20%
Product weight	13 g
Type of mounting	External hexagon, AF 12
Pneumatic connection 1	External thread M5
Pneumatic connection 2	for pneumatic tubing outside diameter 4 mm
Releasing ring color	Blue
Material of screwed plug	Brass, nickel-plated
Note on materials	RoHS-compliant
Housing material	PBT
Releasing ring material	POM
Material of tubing seal	NBR
Material of tube retaining claw	High-alloy stainless steel