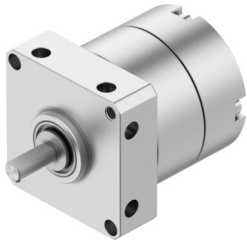


# Rotary actuator DSM-T-6-90-P

Part number: 1564894

FESTO



 General operating condition

## Data sheet

| Feature                                  | Value  |
|--|--|
| Size                                     | 6  |
| Cushioning angle                         | 0.5 deg  |
| Swivel angle                             | 0 deg ... 90 deg   |
| Permissible stop radius                  | ≥10 mm   |
| Cushioning                               | Elastic cushioning rings/pads at both ends                         |
| Mounting position                        | Any  |
| Mode of operation                        | Double-acting  |
| Structural design                        | Rotary vane  |
| Position sensing                         | None   |
| Symbol                                   | 00991265   |
| Operating pressure                       | 0.4 MPa ... 0.8 MPa  |
| Operating pressure                       | 4 bar ... 8 bar  |
| Max. swivel frequency at 6 bar           | 3 Hz   |
| Repetition accuracy                      | 1 deg  |
| Operating medium                         | Compressed air as per ISO 8573-1:2010 [7:4:4]                      |
| Information on operating and pilot media | Operation with oil lubrication possible (required for further use) |
| Corrosion resistance class (CRC)         | 0 - No corrosion stress  |
| LABS (PWIS) conformity                   | VDMA24364-B2-L   |
| Ambient temperature                      | 0 °C ... 60 °C   |
| Max. stop force                          | 15 N   |
| Max. axial force                         | 10 N   |
| Max. radial force                        | 15 N   |
| Theoretical torque at 6 bar              | 0.3 Nm   |
| Permissible mass moment of inertia       | 6.5E-4 kgm <sup>2</sup>  |
| Product weight                           | 60 g   |
| Type of mounting                         | With internal thread   |
| Pneumatic connection                     | M3   |
| Note on materials                        | RoHS-compliant   |
| Drive shaft material                     | High-alloy stainless steel   |
| Seals material                           | TPE-U(PU)  |
| Housing material                         | Anodized   |