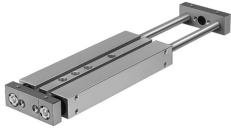


Twin cylinder DPZJ-25-80-P-A-KF-S2

Part number: 162121

FESTO



 General operating condition

Data sheet

| Feature | Value |
|--|--|
| Stroke | 80 mm |
| Adjustable end position range/length | 10 mm |
| Piston diameter | 25 mm |
| Drive unit operating mode | Yoke |
| Cushioning | Elastic cushioning rings/pads at both ends |
| Mounting position | Any |
| Guide | Recirculating ball bearing |
| Structural design | Guide |
| Position sensing | Via proximity switch |
| Symbol | 00991243 |
| Variants | Through piston rod |
| Operating pressure | 0.1 MPa ... 1 MPa |
| Operating pressure | 1 bar ... 10 bar |
| Max. speed | 1 m/s |
| Mode of operation | Double-acting |
| Operating medium | Compressed air as per ISO 8573-1:2010 [7:4:4] |
| Information on operating and pilot media | Operation with oil lubrication possible (required for further use) |
| Corrosion resistance class (CRC) | 0 - No corrosion stress |
| LABS (PWIS) conformity | VDMA24364-B1/B2-L |
| Ambient temperature | -20 °C ... 80 °C |
| Impact energy in the end positions | 0.3 J |
| Theoretical force at 6 bar, retracting | 452 N |
| Theoretical force at 6 bar, advancing | 452 N |
| Alternative connections | See product drawing |
| Pneumatic connection | M5 |
| Cover material | Wrought aluminum alloy |
| Seals material | NBR |
| Housing material | Wrought aluminum alloy |
| Piston rod material | Case-hardened steel |