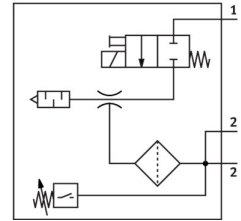
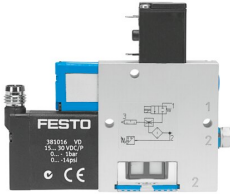


# Vacuum generator VADM-70-N

Part number: 162515

FESTO



[PDF](#) General operating condition

## Data sheet

| Feature                       | Value   |
|-------------------------------|---|
| Nominal width of Laval nozzle | 0.7 mm  |
| Width dimension               | 15 mm   |
| Muffler construction type     | Closed  |
| Mounting position             | Any   |
| Ejector characteristics       | High vacuum                                       |
| Grade of filtration           | ≤40 µm  |
| Manual override               | Non-detenting                                     |
| Integrated function           | On/off valve, electric<br>Filter<br>Vacuum switch |
| Measured variable             | Relative pressure                                 |
| Measuring principle           | Piezoresistive                                    |
| Switching element function    | N/O contact                                       |
| Switching function            | Threshold value comparator                        |
| Symbol                        | 00991304  |
| Valve function                | Closed  |
| Reverse polarity protection   | for all electrical connections                    |
| Display type                  | LED   |
| Setting range hysteresis      | -0.05 MPa ... -0.005 MPa                          |
| Setting range hysteresis      | -0.5 bar ... -0.05 bar                            |
| Hysteresis setting range      | -7.25 psi ... -0.725 psi                          |
| Setting options               | Potentiometer                                     |
| Switching status indication   | Optical   |
| Setting range threshold value | -0.09 MPa ... 0 MPa                               |
| Setting range threshold value | -0.9 bar ... 0 bar                                |
| Threshold value setting range | -13.05 psi ... 0 psi                              |
| Operating pressure            | 0.15 MPa ... 0.8 MPa                              |
| Operating pressure            | 1.5 bar ... 8 bar                                 |
| Operating pressure            | 21.75 psi ... 116 psi                             |
| Max. vacuum                   | 85 %  |
| Nominal operating pressure    | 0.6 MPa   |
| Nominal operating pressure    | 6 bar   |
| Nominal operating pressure    | 87 psi  |

| Feature                                       | Value  |
|---|--|
| Air supply time at nominal operating pressure | 2.2 s  |
| DC operating voltage range                    | 21.6 V ... 26.4 V                                |
| Duty cycle                                    | 100%   |
| Switching output                              | NPN  |
| Certification                                 | RCM compliance mark<br>c UL us - Recognized (OL) |
| CE marking (see declaration of conformity)    | As per EU EMC directive                          |
| Operating medium                              | Compressed air as per ISO 8573-1:2010 [7:4:4]    |
| Information on operating and pilot media      | Operation with oil lubrication not possible      |
| Corrosion resistance class (CRC)              | 2 - Moderate corrosion stress                    |
| LABS (PWIS) conformity                        | VDMA24364-B1/B2-L                                |
| Temperature of medium                         | 0 °C ... 60 °C                                   |
| Degree of protection                          | IP65   |
| Ambient temperature                           | 0 °C ... 50 °C                                   |
| Product weight                                | 145 g  |
| Pressure measuring range                      | 0 MPa ... 0.1 MPa                                |
| Pressure measuring range                      | 0 bar ... 1 bar                                  |
| Pressure measuring range                      | 0 psi ... 14.5 psi                               |
| Electrical connection                         | M8x1<br>Plug                                     |
| Type of mounting                              | With through-hole<br>With internal thread        |
| Pneumatic connection 1                        | M5   |
| Pneumatic connection 3                        | Pneumatic muffler integrated                     |
| Vacuum connection                             | G1/8   |
| Note on materials                             | RoHS-compliant                                   |
| Seals material                                | NBR  |
| Female nozzle material                        | Brass, nickel-plated                             |
| Compressed air filter material                | PA   |
| Material of filter housing                    | PC   |
| Housing material                              | Wrought aluminum alloy                           |
| Muffler material                              | PE<br>POM  |
| Material of piston                            | POM  |
| Material of jet nozzle                        | Brass, nickel-plated                             |