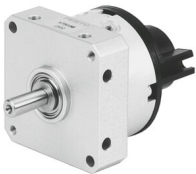


Rotary actuator DSM-10-240-P-A

Part number: 173201

FESTO



 General operating condition

Data sheet

| Feature | Value |
|---|--|
| Size | 10 |
| Cushioning angle | 0.5 deg |
| Swivel angle | 0 deg ... 240 deg |
| Permissible stop radius | ≥13 mm |
| Cushioning | Elastic cushioning rings/pads at both ends |
| Mounting position | Any |
| Mode of operation | Double-acting |
| Structural design | Rotary vane |
| Position sensing | For proximity sensor |
| Symbol | 00991265 |
| Operating pressure | 0.25 MPa ... 0.8 MPa |
| Operating pressure | 2.5 bar ... 8 bar |
| Max. swivel frequency at 6 bar | 2 Hz |
| Repetition accuracy | 1 deg |
| Operating medium | Compressed air as per ISO 8573-1:2010 [7:4:4] |
| Information on operating and pilot media | Operation with oil lubrication possible (required for further use) |
| Corrosion resistance class (CRC) | 0 - No corrosion stress |
| LABS (PWIS) conformity | VDMA24364-B1/B2-L |
| Cleanroom suitability, measured according to ISO 14644-14 | Class 6 according to ISO 14644-1 |
| Ambient temperature | 0 °C ... 60 °C |
| Max. stop force | 60 N |
| Max. axial force | 10 N |
| Max. radial force | 30 N |
| Theoretical torque at 6 bar | 0.85 Nm |
| Permissible mass moment of inertia | 0.0026 kgm ² |
| Product weight | 149 g |
| Type of mounting | With internal thread |
| Pneumatic connection | M3 |
| Note on materials | RoHS-compliant |
| Drive shaft material | High-alloy stainless steel |
| Seals material | TPE-U(PU) |
| Housing material | Anodized |