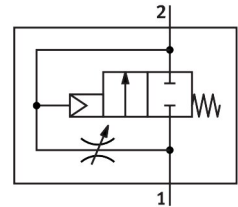


# On/off valve HEL-1-D-MAXI-NPT

Part number: 173923

FESTO



General operating condition

## Data sheet

Feature	Value
Width dimension	65 mm
Exhaust air function	Adjustable
Actuation type	Pneumatic
Sealing principle	Soft
Mounting position	Any
Manual override	None
Structural design	Piston gate valve
Reset method	Mechanical spring
Type of control	directly
Flow direction	Non-reversible
Symbol	00991513
Valve function	2/2-way, closed, monostable
Operating pressure	0.3 MPa ... 1.6 MPa
Operating pressure	3 bar ... 16 bar
b-value	0.54
C value	28.3 l/sbar
Normal nominal flow rate (normalized to DIN 1343)	6500 l/min
Operating medium	Compressed air as per ISO 8573-1:2010 [7:4:4] Inert gases
Information on operating and pilot media	Operation with oil lubrication possible (required for further use)
Corrosion resistance class (CRC)	2 - Moderate corrosion stress
LABS (PWIS) conformity	VDMA24364-B1/B2-L
Air quality class at the output	Compressed air as per ISO 8573-1:2010 [7:4:4] Inert gases
Temperature of medium	-10 °C ... 60 °C
Ambient temperature	-10 °C ... 60 °C
Product weight	394 g
Type of mounting	With accessories
Pneumatic connection 1	1 NPT
Pneumatic connection 2	1 NPT
Note on materials	RoHS compliant
Seals material	NBR
Housing material	Die-cast aluminum